



KEVIN NIX

Erosion Control Supervisor
Stormwater Division

Forsyth County Department of Engineering

We all have a stake in protecting the County's water resources. For some, it's a calling. Forsyth native Kevin Nix works as an Erosion Control Supervisor for the Stormwater Division and spends his days inspecting the system, walking streams, talking to residents, and more. He remembers the County before it continually topped "fastest growing" lists and is committed to preserving and protecting the natural resources for all who call it home.

How did you get interested in the environment and protecting water quality?

I worked in my family's business installing septic tanks and saw how water could be harmed when good practices aren't in place. That concerned me. When I got a chance to work in the Stormwater Division 11 years ago, it seemed like a good fit.

What do you like most about your job? *No two days are alike and that keeps me on my toes. The sole purpose of this job is to make the community better every day. That's my focus when I'm talking to people about stormwater. It makes me feel good to help them see that a change they make can make the County better for everybody.*

What's the easiest thing someone could do to help protect water quality? *Be conscientious of what you're doing to the environment and what's downstream. How much water are you using outside? Know that fertilizers can get washed into streams, don't litter or pour chemicals out, and pick up after your pets.*



SUMMER 2017

THE RESOURCE

UNDERSTANDING OUR WATER

BOOST WATER QUALITY THROUGH CONSERVATION!

Want to do more to protect our local environment? Conserving water is great start! Following good habits can help protect local waterways and the environment. By reducing harmful things that could flow into streams, you're helping protect wildlife in and around waterways and preserving the County's natural resources for everyone's enjoyment. Amp up your impact by:

- » Watering thoroughly but less frequently
- » Limiting use of fertilizers and pesticides to keep chemicals that hurt aquatic habitats out of streams
- » Cleaning paved/hard surfaces – driveway, patio, sidewalks, garage floor, etc. – with a broom or blower not a hose
- » Using a commercial car wash that recycles its water instead of washing your car in the driveway.
- » Participating in community cleanups and Adopt-a-Stream programs
- » Using native or drought resistant plants and grasses



Visit www.cleanwatercampaign.org or www.forsythco.com for more ideas!



SUMMER 2017

The Department of Engineering publishes *The Resource* on a regular basis to build community knowledge and understanding of our shared water resources.

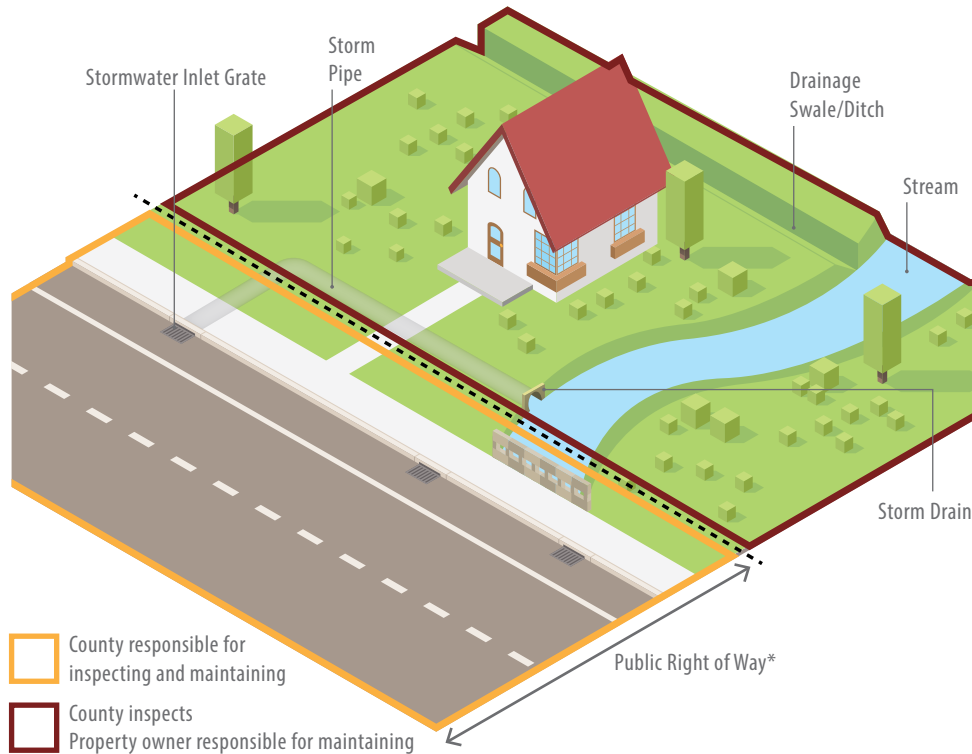
In this Issue...

- » Connecting Water Quality and Water Conservation
- » Stormwater Management 101: Who is Responsible for What?
- » Water Quality Spotlight: Forsyth Native Dedicated to the Environment and Community

STORMWATER MANAGEMENT LEVEL OF SERVICE

Effective stormwater management takes planning, a working system, and regular inspections and maintenance to function properly. So who is responsible for it? The County Department of Engineering leads the effort but we all have a role to play.

The Engineering Department provides a certain **level of service** through its **Stormwater Division** for maintaining stormwater infrastructure to help protect water quality, preserve natural resources, and reduce flooding on roads, and property. Inspections of all parts of the system are a regular part of this effort but property owners are responsible for repairing and maintaining what is on their property.



*Road right-of-way (ROW) extends several feet beyond the pavement to provide a corridor for public utilities including stormwater infrastructure. The County maintains its utilities within the right-of-way. Anything beyond the right-of-way is on private property and is the responsibility of the owner (whether individual, HOA, business, or other) to maintain.

Area outlined in yellow shows what parts of the stormwater system the County inspects and maintains. Areas outlined in dark red show what the County inspects only. Property owners are responsible for maintenance of the system on their property including any necessary repairs.

STORMWATER MANAGEMENT IN ACTION

The Stormwater Division carries out the County's Stormwater Management Program (SWMP)

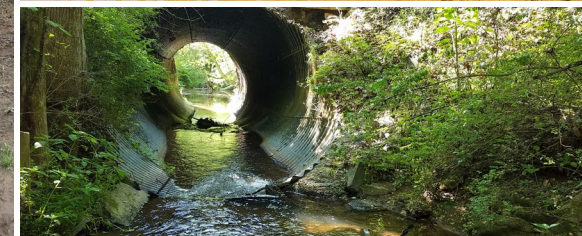
Enforcing the erosion and sediment control ordinance



Monitoring habitat and aquatic life in streams and other waterways



Inspecting detention ponds and drainage systems



Conducting water pollution prevention programs

More SWMP Activities

- » Cleaning catch basins / inlets on streets and removing litter
- » Providing training on using pesticides, fertilizers, and herbicides
- » Evaluating impaired streams and addressing any issues through action plans
- » Coordinating updates and results on impaired streams to the state Environmental Protection Division (EPD)