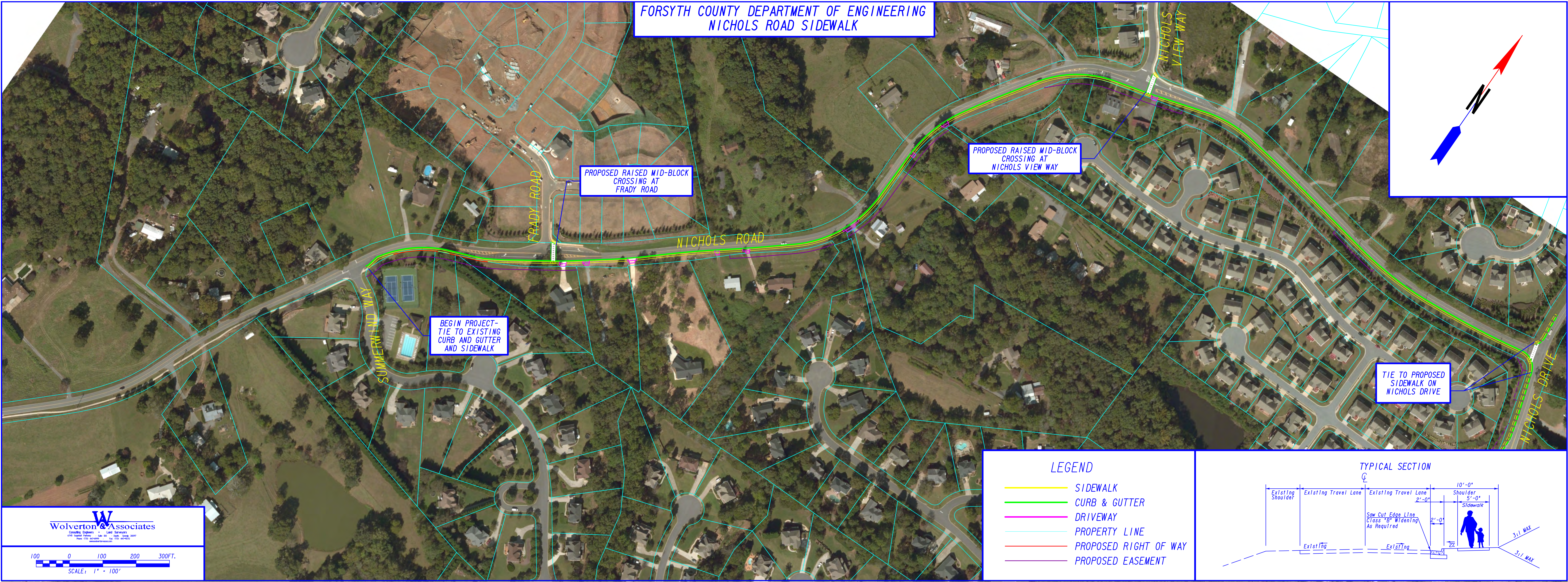


FORSYTH COUNTY DEPARTMENT OF ENGINEERING  
NICHOLS ROAD SIDEWALK



**Wolverton & Associates**  
Consulting Engineers • Land Surveyors  
2425 Sunset Parkway, Suite 100 • Dalton, Georgia 30707  
Phone: (770) 447-9990 • Fax: (770) 447-9070  
www.wolvertonassociates.com

100 0 100 200 300 FT.  
SCALE: 1" = 100'

**LEGEND**

- SIDEWALK
- CURB & GUTTER
- DRIVEWAY
- PROPERTY LINE
- PROPOSED RIGHT OF WAY
- PROPOSED EASEMENT

**TYPICAL SECTION**