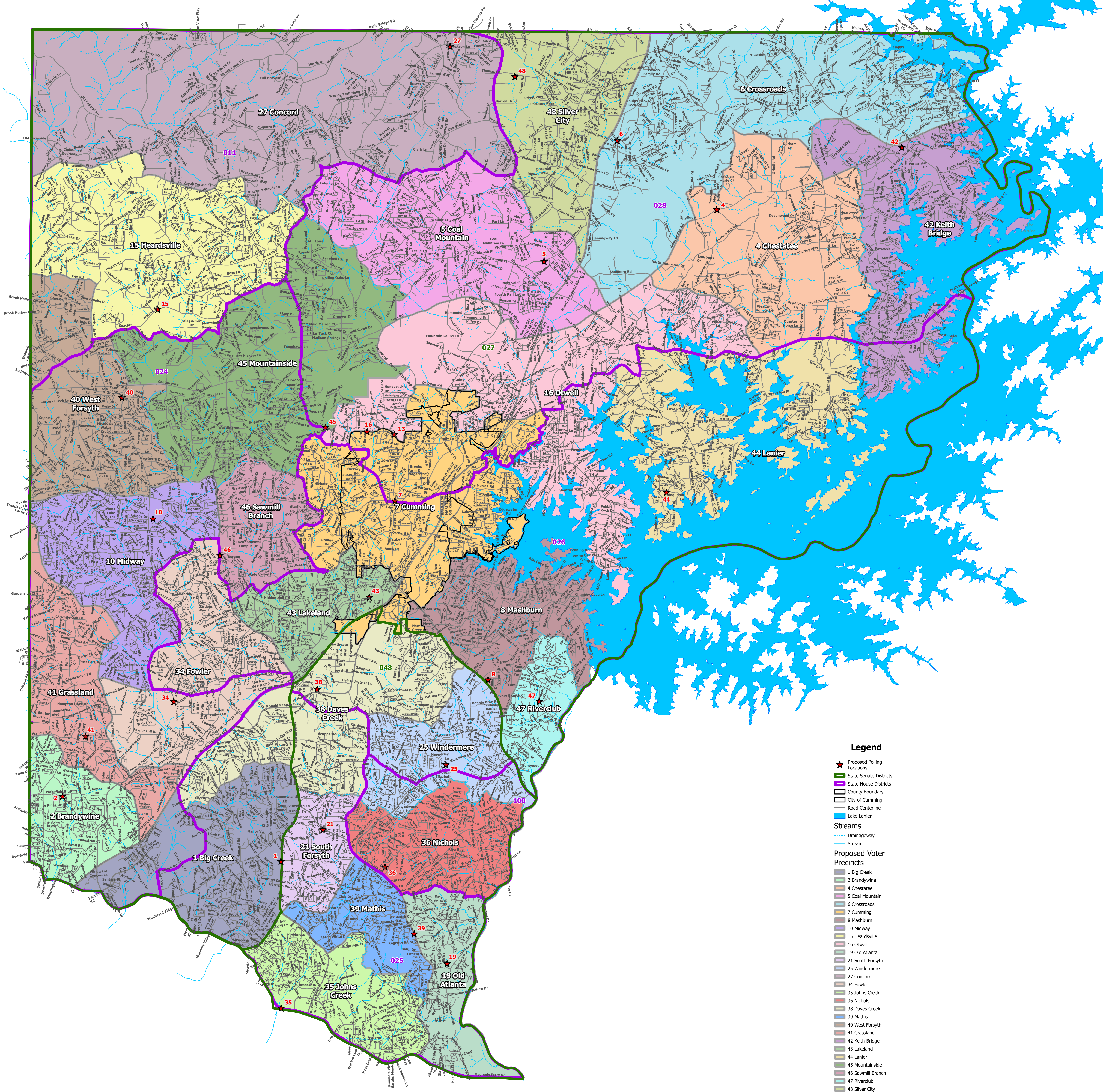


# PROPOSED Precincts and Polling Places Forsyth County, GA To be considered on February 11, 2022



Forsyth County Georgia  
GIS Department

0 125 250 500 750 1,000  
Feet

Date created: 1/6/2022

Coordinate System:  
State Plane, Georgia West FIPS 1002  
Feet, U.S. Survey  
Projection:  
Transverse Mercator  
Datum:  
North American Datum of 1983  
Map Source: County GIS Database  
Produced by Forsyth County  
Geographic Information Systems  
COPYRIGHT Forsyth County, GA 2019

The information included on this map has been prepared by Forsyth County staff from a variety of sources and is subject to change without notice. Forsyth County makes no representation or warranty, express or implied, as to accuracy, completeness, timeliness, or utility of the map or any information. Forsyth County will not be liable for any general, special, punitive, or consequential damages, including, but not limited to, lost revenue or lost profits resulting from the use or reuse of the information contained on this map. Any use of the map or information on this map is prohibited except by written permission of Forsyth County.

C:\ActiveProjects\Redistricting\Map\Precincts\VotePrecinctPublishingRoadMap.aprx