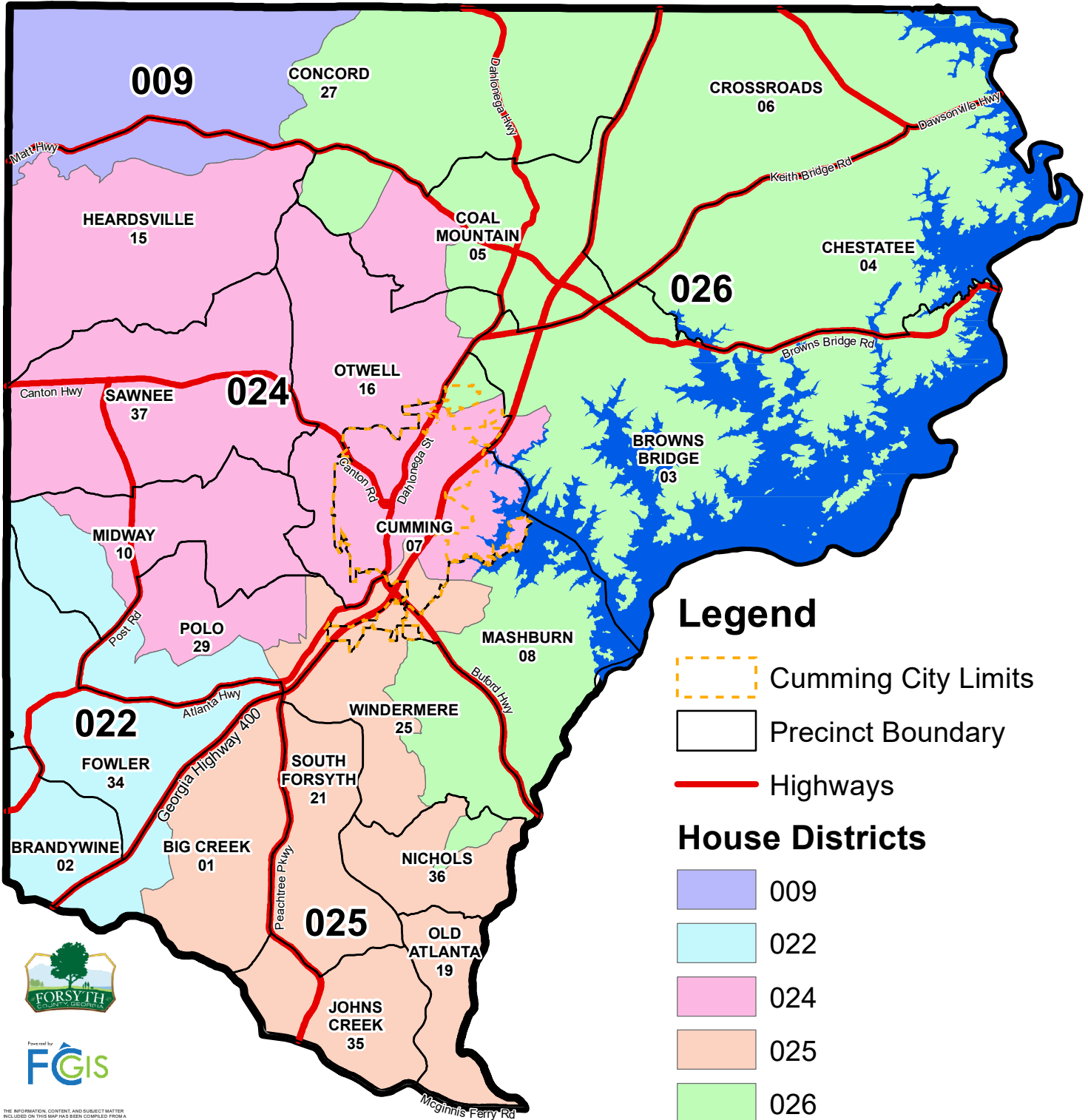



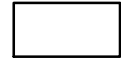

House Districts

Forsyth County, GA


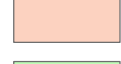

Effective for the 2021 Election Cycle



Legend

-  Cumming City Limits
-  Precinct Boundary
-  Highways

House Districts

-  009
-  022
-  024
-  025
-  026

Elections Office
 1201 Sawnee Dr
 Cumming, GA 30004
 (770) 781-2118
www.forsythco.com



Powered by **FGIS**

THE INFORMATION, CONTENT, AND SUBJECT MATTER INCLUDED ON THIS MAP HAS BEEN COMPILED FROM A VARIETY OF SOURCES AND IS SUBJECT TO CHANGE WITHOUT NOTICE AS A RESULT OF UPDATES, REVISIONS, AND CORRECTIONS. FORSYTH COUNTY MAKES NO WARRANTIES, REPRESENTATIONS OR ENDORSEMENTS, WHETHER EXPRESS OR IMPLIED, AS TO THE ACCURACY, COMPLETENESS, TIMELINESS, OR RIGHTS TO THE USE OF SUCH INFORMATION, AND EXPRESSLY DISCLAIMS ALL SUCH WARRANTIES OF ANY KIND, INCLUDING, AND NOT LIMITED TO, IMPLIED WARRANTIES OF MERCHANTABILITY OR FITNESS FOR A PARTICULAR PURPOSE. FORSYTH COUNTY SHALL NOT BE LIABLE FOR ANY SPECIAL, DIRECT, INDIRECT, INCIDENTAL, PUNITIVE, OR CONSEQUENTIAL DAMAGES, INCLUDING, AND NOT LIMITED TO, LOST REVENUES, LOST PROFITS, OR MONEY LOSS OF ANY KIND ARISING OR RESULTING FROM THE RELIANCE UPON, USE, MISUSE, OR INABILITY TO USE THIS MAP OR THE INFORMATION, CONTENT, OR SUBJECT MATTER INCLUDED ON THIS MAP. ANY SALE OF THIS MAP OR INFORMATION CONTAINED ON THIS MAP IS EXPRESSLY PROHIBITED EXCEPT BY WRITTEN PERMISSION OF FORSYTH COUNTY.

Copyright 2021 Forsyth County Government
 Document Path: G:\MAP AND DIGITAL SALES\Stock Maps\OTERMXD\HouseDet_2021 8x11 01032021.mxd
 Date Saved: 8/16/2021

Coordinate System: State Plane, Georgia West FIPS 1002
 Feet, U.S. Survey
 Projection: Transverse Mercator
 Datum: North American Datum of 1983

