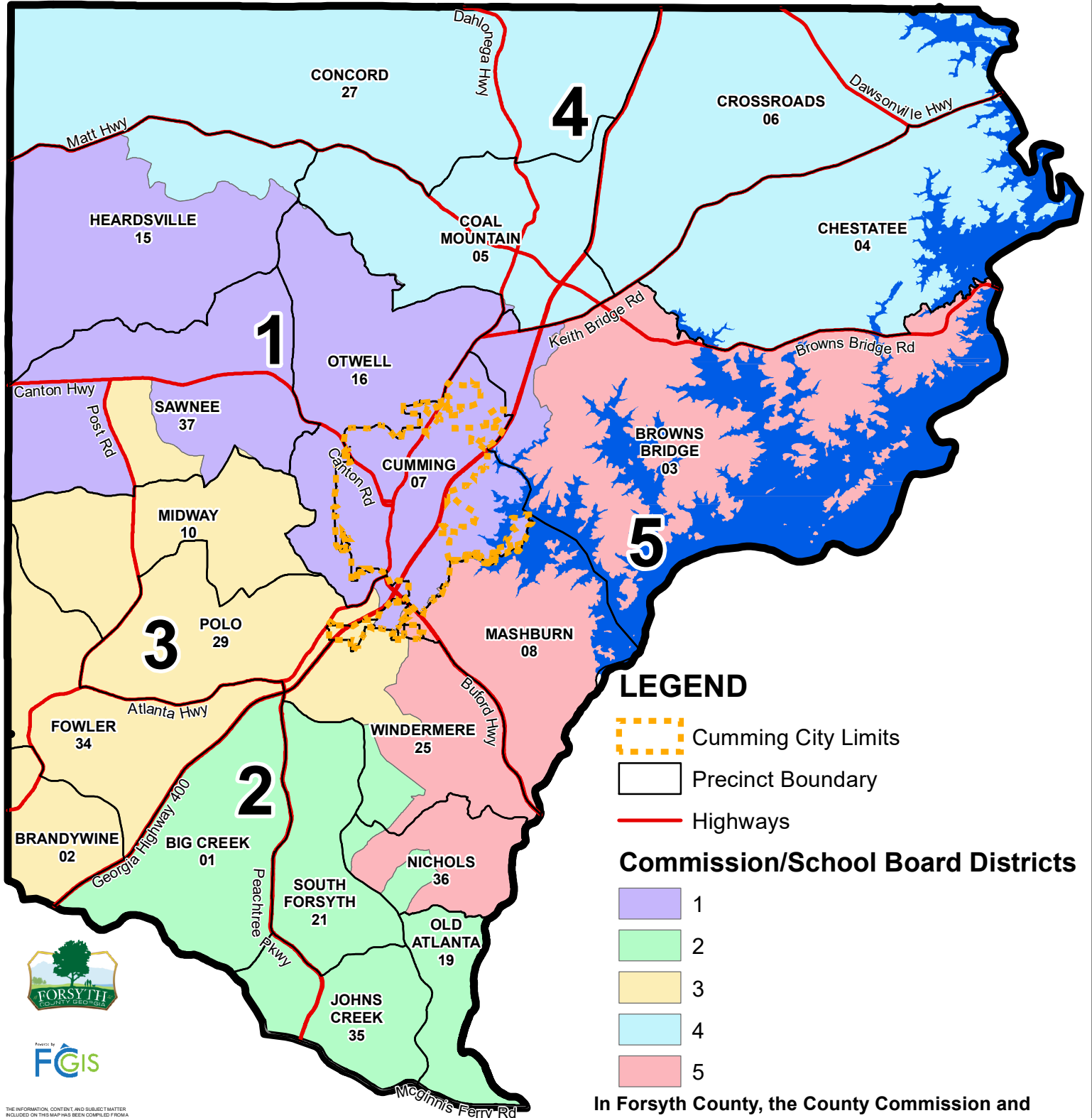

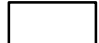




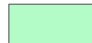
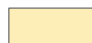

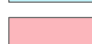
Commission & Board of Education Districts Forsyth County, GA Effective for the 2021 Election Cycle



LEGEND

-  Cumming City Limits
-  Precinct Boundary
-  Highways

Commission/School Board Districts

-  1
-  2
-  3
-  4
-  5

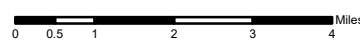
In Forsyth County, the County Commission and Board of Education District lines are the same.



THE INFORMATION, CONTENT, AND SUBJECT MATTER INCLUDED ON THIS MAP HAS BEEN COMPILED FROM A VARIETY OF SOURCES AND IS SUBJECT TO CHANGE WITHOUT NOTICE AS A RESULT OF UPDATES, REVISIONS, AND CORRECTIONS. FORSYTH COUNTY MAKES NO WARRANTIES, REPRESENTATIONS OR ENDORSEMENTS, WHETHER EXPRESS OR IMPLIED, AS TO THE ACCURACY, COMPLETENESS, TIMELINESS, OR USE OF THE INFORMATION, AND EXPRESSLY DISCLAIMS ALL SUCH WARRANTIES OF ANY KIND, INCLUDING, AND NOT LIMITED TO, IMPLIED WARRANTIES OF MERCHANTABILITY OR FITNESS FOR A PARTICULAR PURPOSE. FORSYTH COUNTY SHALL NOT BE LIABLE FOR ANY GENERAL, SPECIAL, DIRECT, INDIRECT, INCIDENTAL, EXEMPLARY, OR CONSEQUENTIAL DAMAGES, INCLUDING AND NOT LIMITED TO, LOSS OF PROFITS, LOSS OF REVENUE, LOSS OF DATA, OR ANY AND ALL DAMAGES OR RESULTS FROM THE RELIANCE UPON, USE, MISUSE, OR INABILITY TO USE THIS MAP OR THE INFORMATION, CONTENT, OR SUBJECT MATTER INCLUDED ON THIS MAP. ANY SALE OF THIS MAP OR INFORMATION CONTAINED ON THIS MAP IS EXPRESSLY PROHIBITED EXCEPT BY WRITTEN PERMISSION OF FORSYTH COUNTY.



Coordinate System: State Plane, Georgia West FIPS 1002
Feet - U.S. Survey
Projection: Transverse Mercator
Datum: North American Datum of 1983



Elections Office
1201 Sawnee Dr
Cumming, GA 30040
(770) 781-2118
www.forsythco.com