

Green Space: GIS Selection Process

The following is a graphic example of the analysis performed on every parcel within Forsyth County. If a parcel met the selection criteria, it was given a predefined weight. If a parcel did not meet the criteria, it was given a weight of zero. All of the weights were totaled and a score was derived for each of the parcels. The higher the value, the more suitable the parcel.



Protection of archeological and historic resources

Weight: 4.0



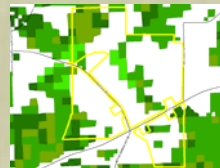
Water quality protection for rivers, streams and water bodies

Weight: 3.8



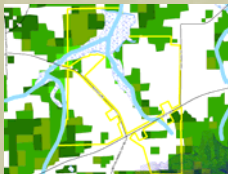
Wetland protection/conservation

Weight: 2.8



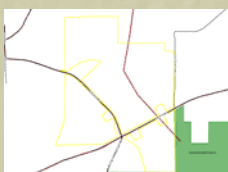
Protection of natural habitat and corridors for native plants

Weight: 2.2



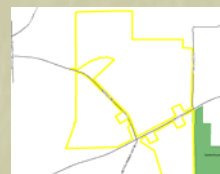
Scenic protection

Weight: 1.8



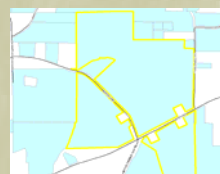
Connection of existing and/or planned areas

Weight: 1.8



Utilizes existing infrastructure

Weight: 1.8



Suitability for passive recreational use

Weight: 3.6



North/South distribution within the county

Weight: 1.4



Assessed cost per acre

Weight: 1.4