

BEGIN PROJECT WID 0208-1
OLD ATLANTA ROAD
STA. 107+00.00
PROJECT PEW 15 (BY OTHERS)
SHARON ROAD
STA. 70+81.19
N 1496870.13
E 230087.76

BEGIN CONSTRUCTION
PROJECT WID 0208-1
BEGIN MILL & INLAY
AND WIDENING
STA. 107+28.00

CURVE KCI			
STA	SE	LT	RT
107+63	EXIST	EXIST	EXIST
110+60	BRC	+2.00%	-2.00%
111+25	ERC	+2.00%	-2.00%
113+15	FLAT	0.00%	0.00%

STA. 109+00.00
N 1496701.99
E 2300195.58

STA. 105+00.00
N 1497016.55
E 2299951.90

CONTROL PT
SVX09000
N 1496961.68
E 2300109.98
STA 106+44.89
75.07' LT
EL 1170.51

GLOBAL PROJECT
SHARON RD SW LLC

(19)
COLUMBIA
WINDERMERE VI, LLC &
COLUMBIA
WINDERMERE V, LLC

OLD ATLANTA RD
CONSTRUCTION CENTERLINE
CURVE KCI
Degree • 5°05'34.6" Delta • 49°15'10.0"
Radius • 1125.00 Length • 973.62
Tangent • 519.66 Length of Cord • 943.52
External • 114.22 S.E. Rate • EXIST
PC Sta • 100+74.82 DB • S 69°36'12.8" E
North 1497235.64 East 2299590.47
PI Sta • 105+94.48
North 1497054.53 East 2300077.55
PT Sta • 110+48.44 DA • S 20°01'02.8" E
North 1496566.27 East 2305255.43

(20)
OLD
ATLANTA
SPE, LLC

EXISTING R/W & PROPERTY LINE
REQUIRED R/W LINE
CONSTRUCTION LIMITS
EASEMENT FOR CONSTRUCTION
& MAINT. OF SLOPES & UTILITIES
EASEMENT FOR CONSTR OF SLOPES
EASEMENT FOR CONSTR OF DRIVES

BEGIN LIMIT OF ACCESSBLA
END LIMIT OF ACCESSELA
LIMIT OF ACCESS
R/W AND LIMIT OF ACCESS



GRESHAM
SMITH AND
PARTNERS



REVISION DATES

FORSYTH COUNTY
ENGINEERING DEPARTMENT
OLD ATLANTA ROAD- PHASE 2

MAINLINE PLAN
OLD ATLANTA ROAD

WID 0208-1
FORSYTH COUNTY

DRAWING NO.
13-01

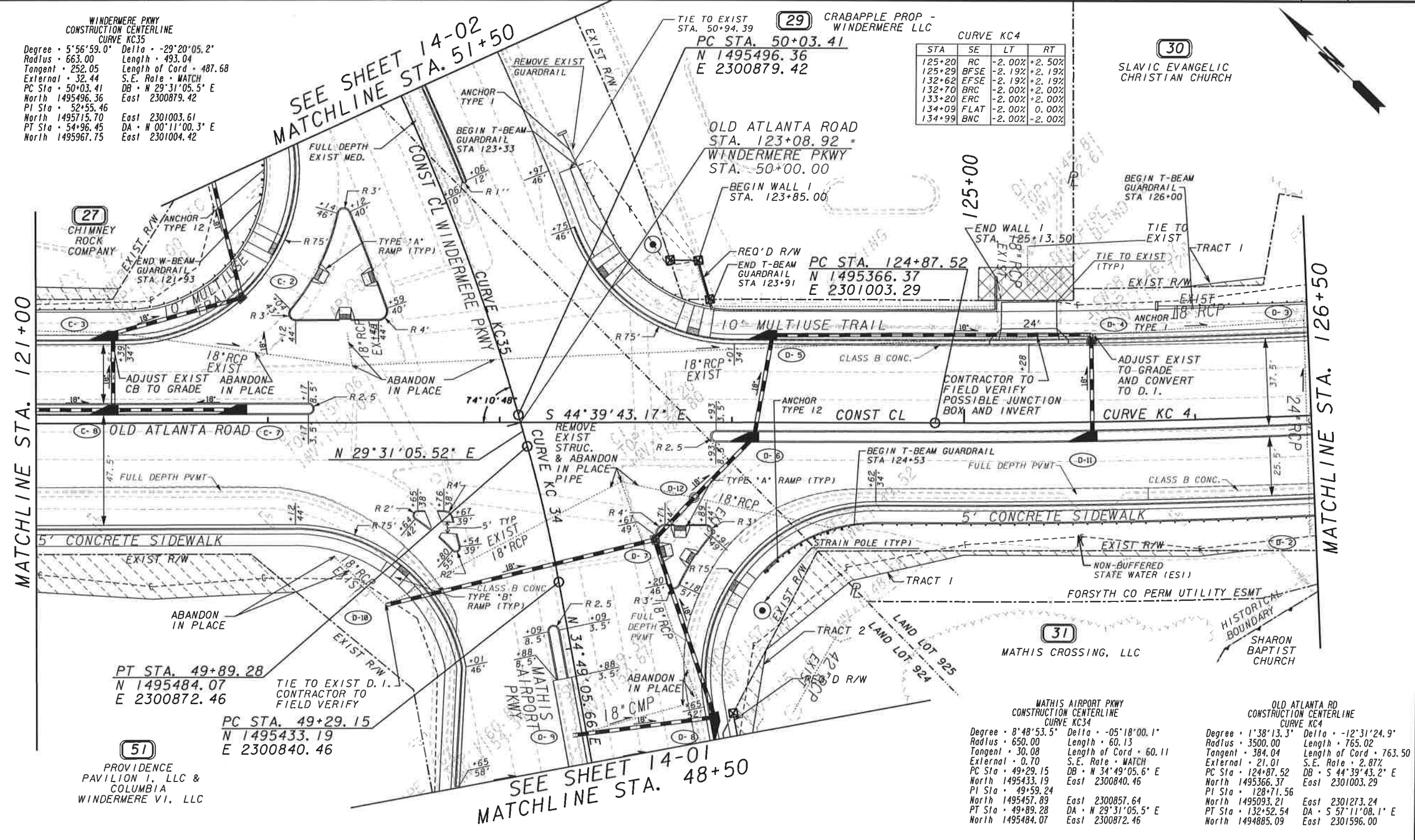
[illegible]

DRAWING No.
13-02

WINDERMERE PKWY
CONSTRUCTION CENTERLINE
CURVE KC35
Degree = 5°56'59.0" Delta = -29°20'05.2"
Radius = 663.00 Length = 493.04
Tangent = 252.05 Length of Cord = 487.68
External = 32.44 S.E. Rate = MATCH
PC Sta = 50+03.41 DB = N 29°31'05.5" E
North 1495496.36 East 2300879.42
PI Sta = 52+55.46 East 2301003.61
North 1495715.70 DA = N 00°11'00.3" E
PT Sta = 54+96.45 East 2301004.42
North 1495967.75

CURVE KC4

STA	SE	LT	RT
125+20	RC	-2.00%	+2.50%
125+29	BFSE	-2.19%	+2.19%
132+62	EFSE	-2.19%	+2.19%
132+70	BRC	-2.00%	+2.00%
133+20	ERC	-2.00%	+2.00%
134+09	FLAT	-2.00%	0.00%
134+99	BNC	-2.00%	-2.00%

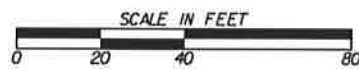


EXISTING R/W & PROPERTY LINE
REQUIRED R/W LINE
CONSTRUCTION LIMITS
EASEMENT FOR CONSTRUCTION
& MAINT. OF SLOPES & UTILITIES
EASEMENT FOR CONSTR OF SLOPES
EASEMENT FOR CONSTR OF DRIVES

BEGIN LIMIT OF ACCESSBLA
END LIMIT OF ACCESSELA
LIMIT OF ACCESS
R/W AND LIMIT OF ACCESS



GRESHAM
SMITH AND
PARTNERS



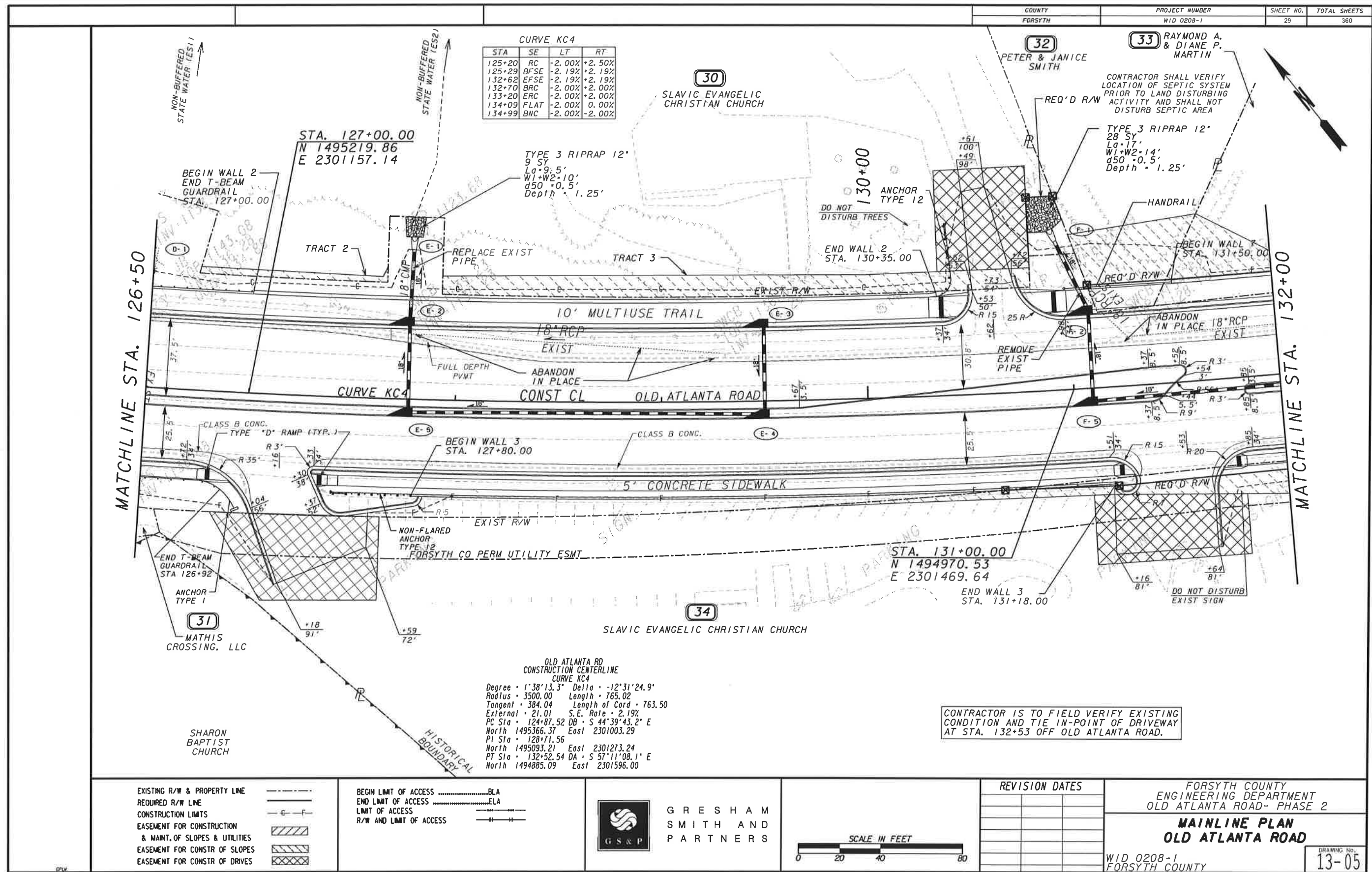
REVISION DATES

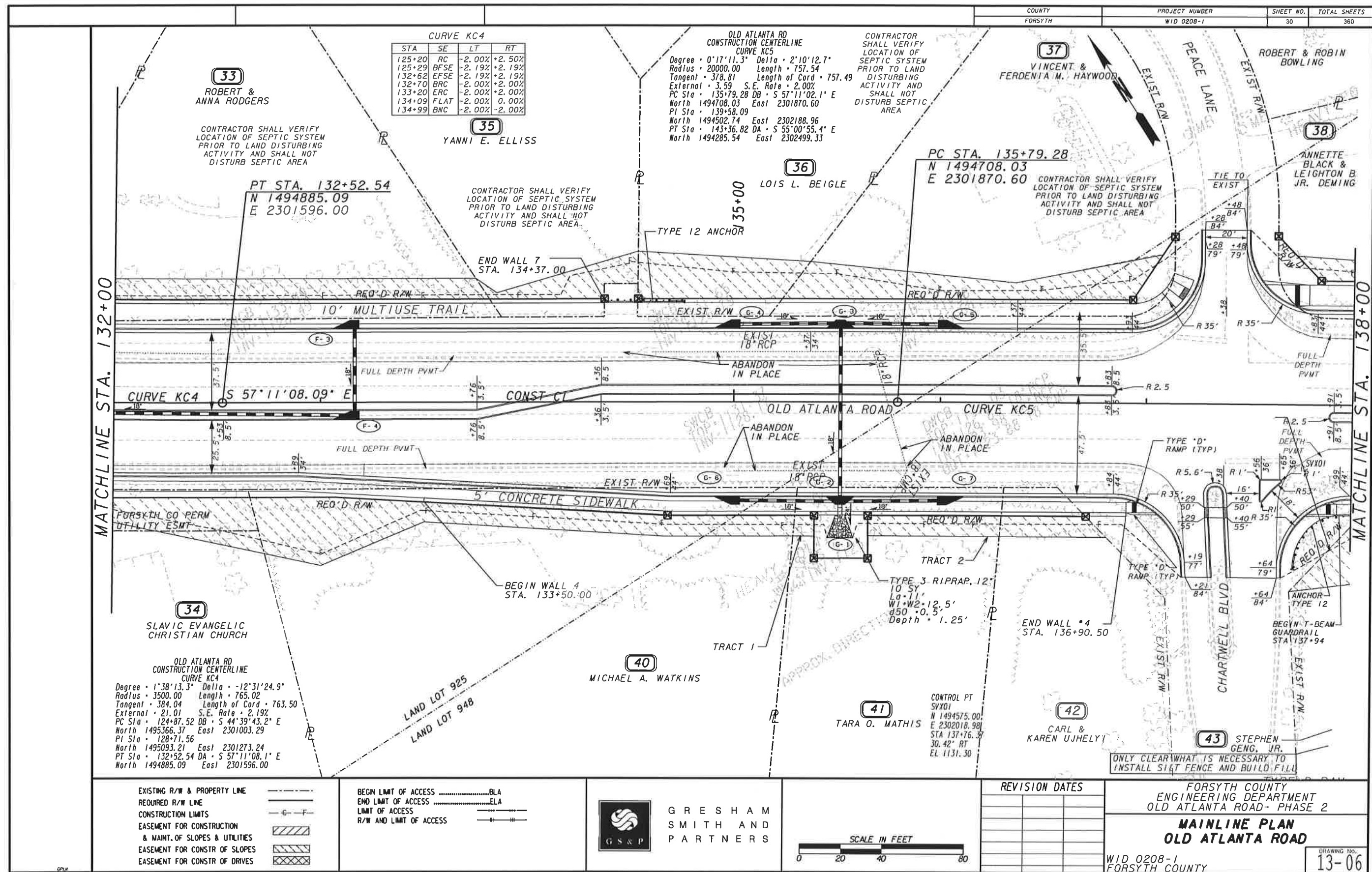
FORSYTH COUNTY
ENGINEERING DEPARTMENT
OLD ATLANTA ROAD- PHASE 2

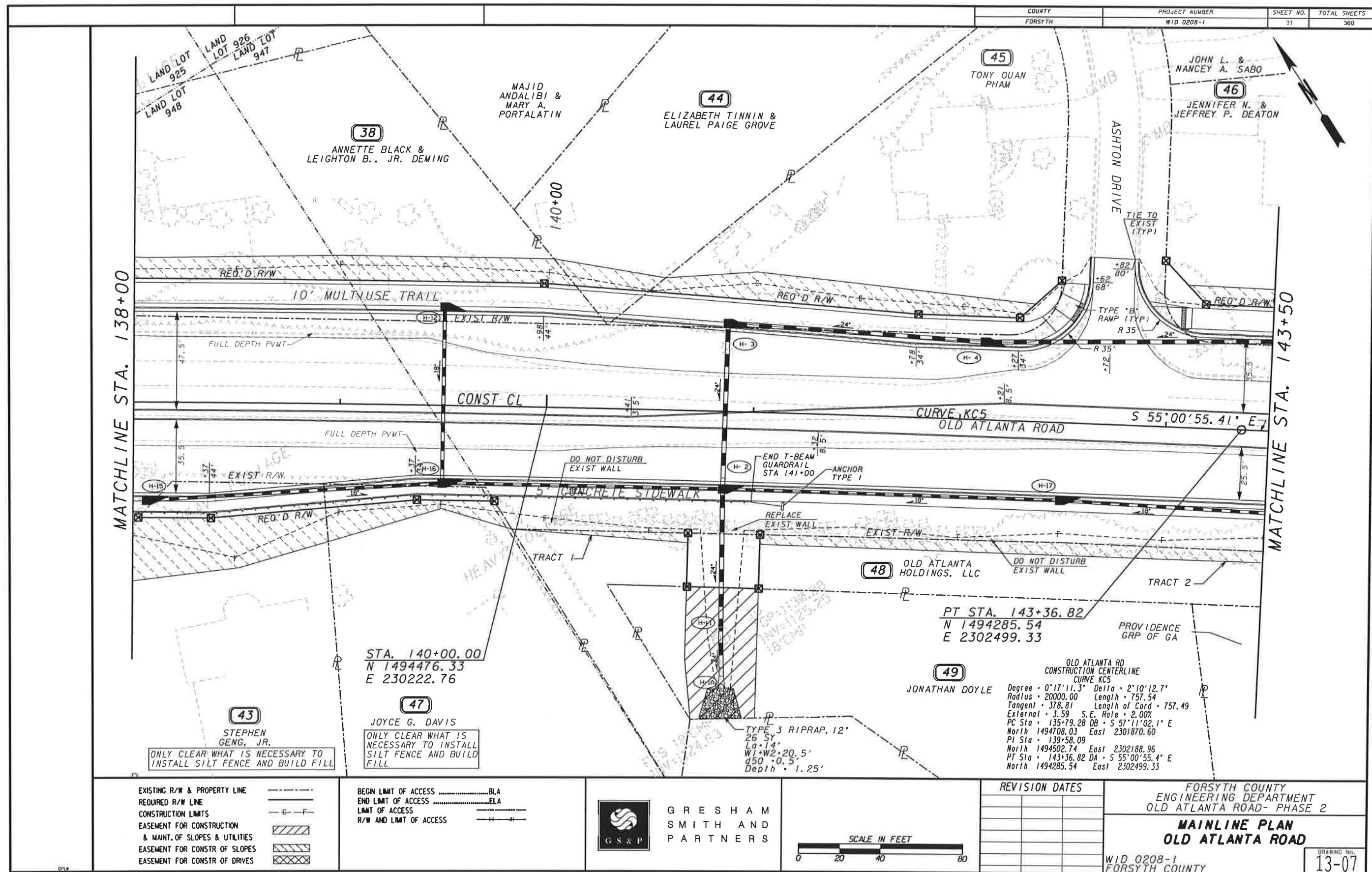
MAINLINE PLAN
OLD ATLANTA ROAD

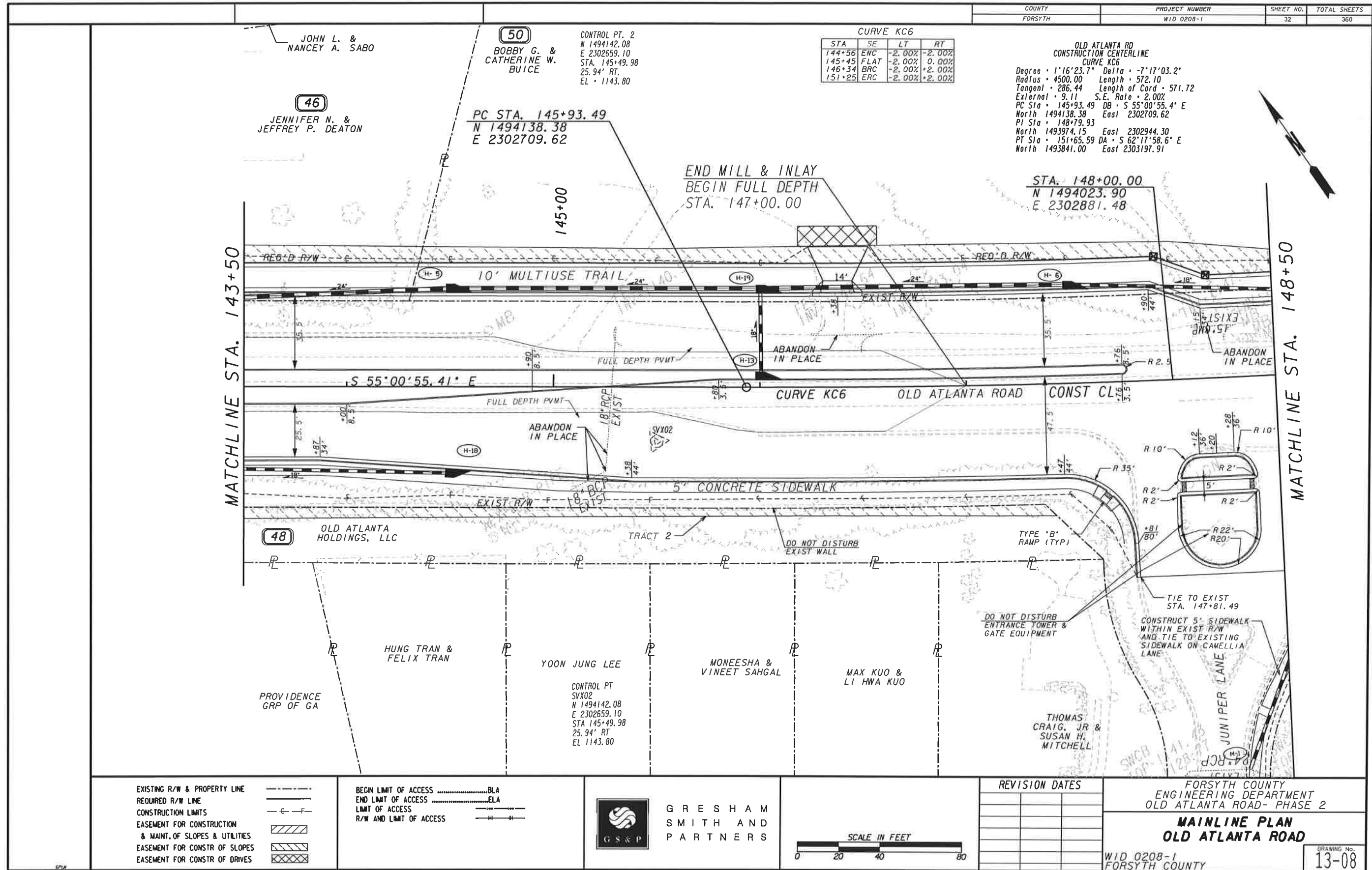
WID 0208-1
FORSYTH COUNTY

DRAWING NO.
13-04

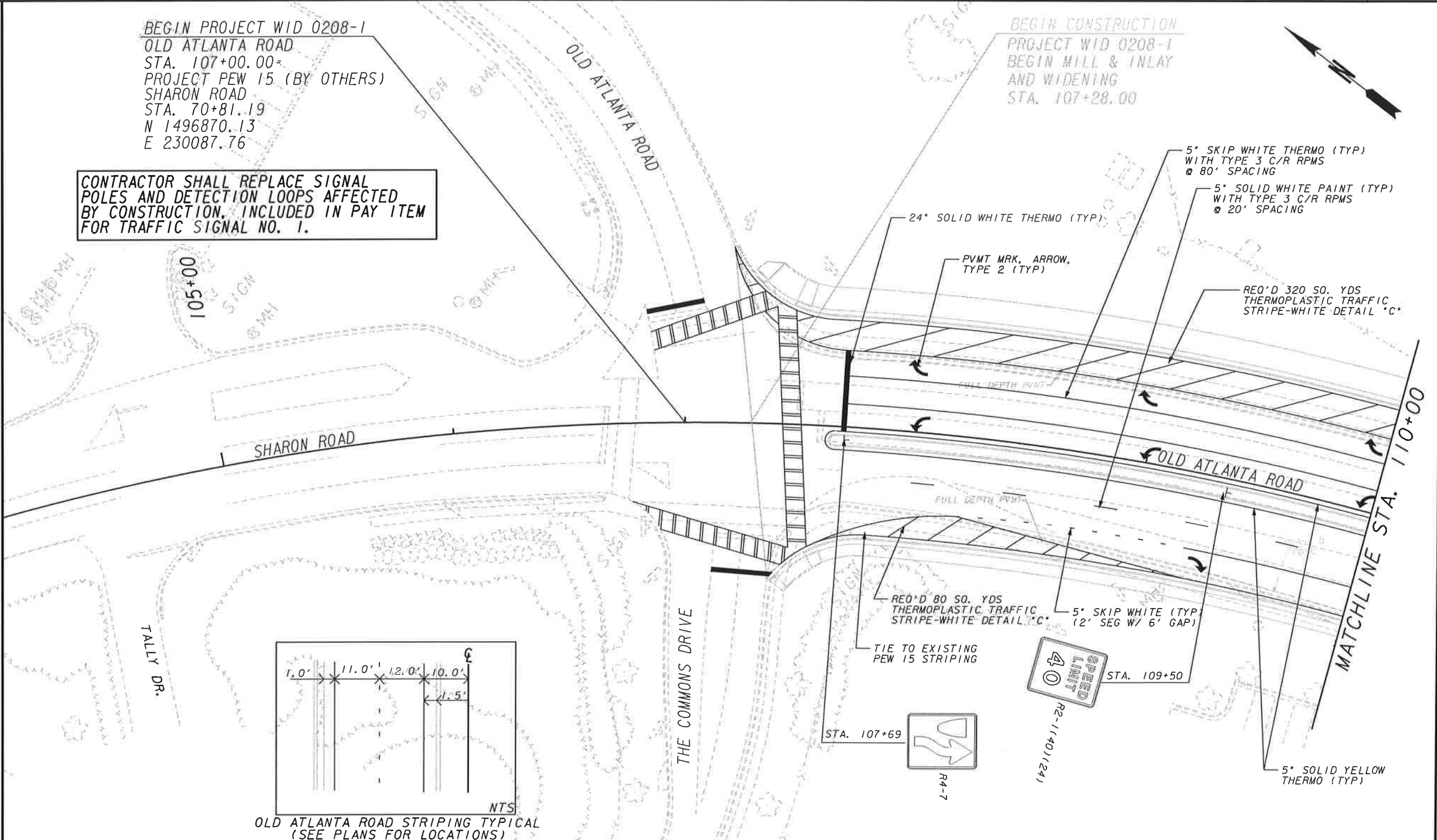


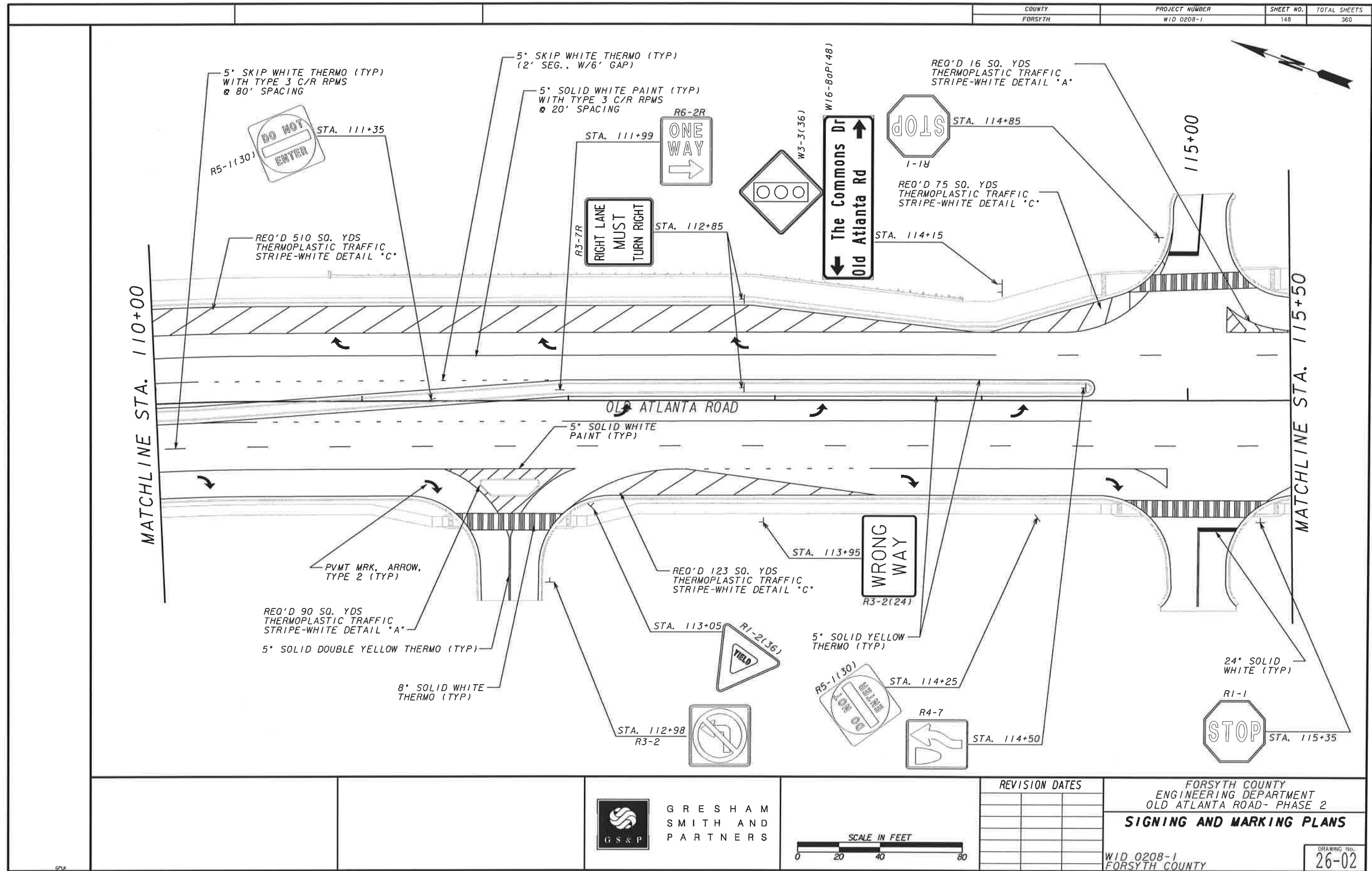


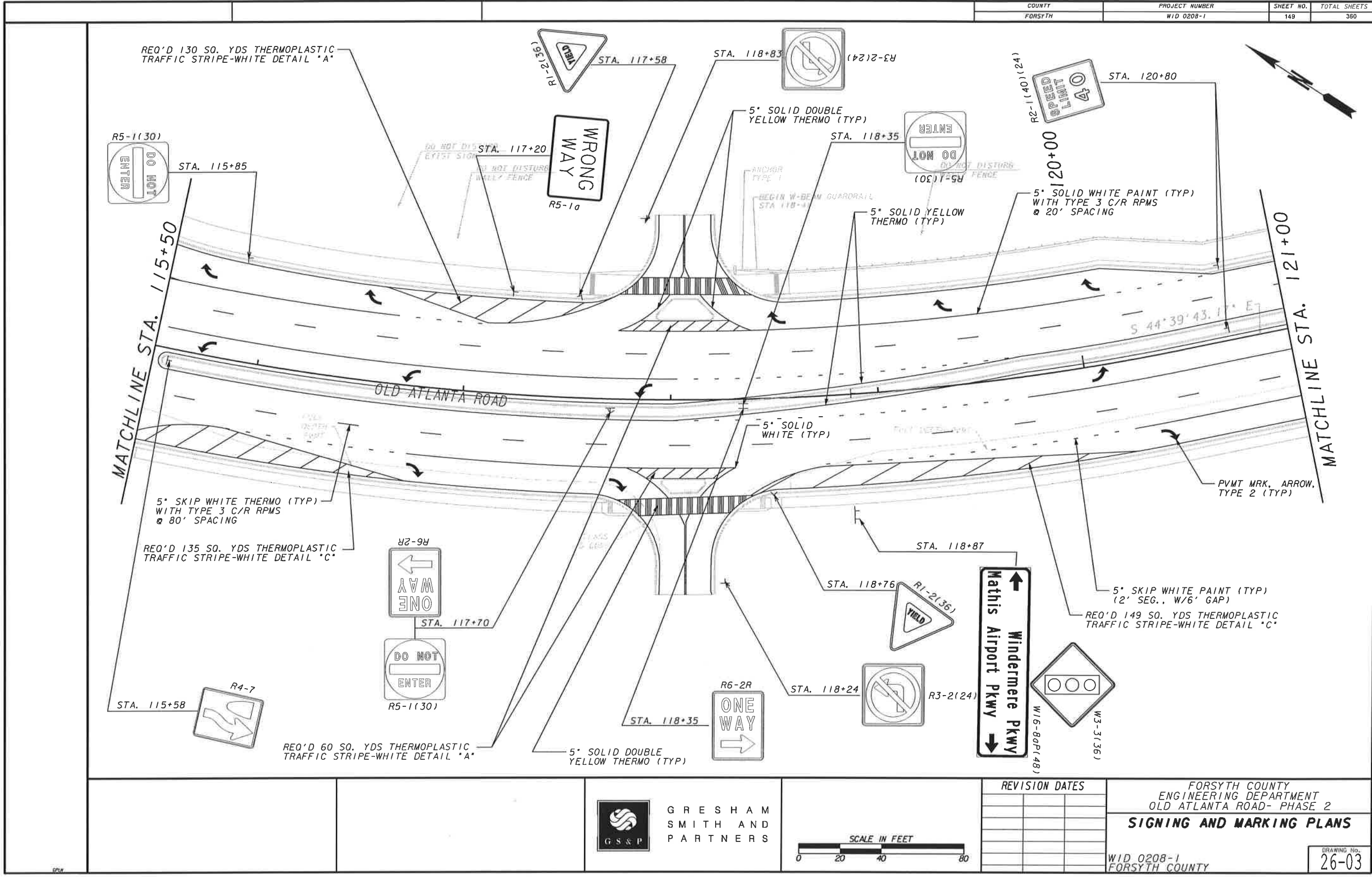




SEE SHEET 13-04
MATCHLINE STA. 48+50







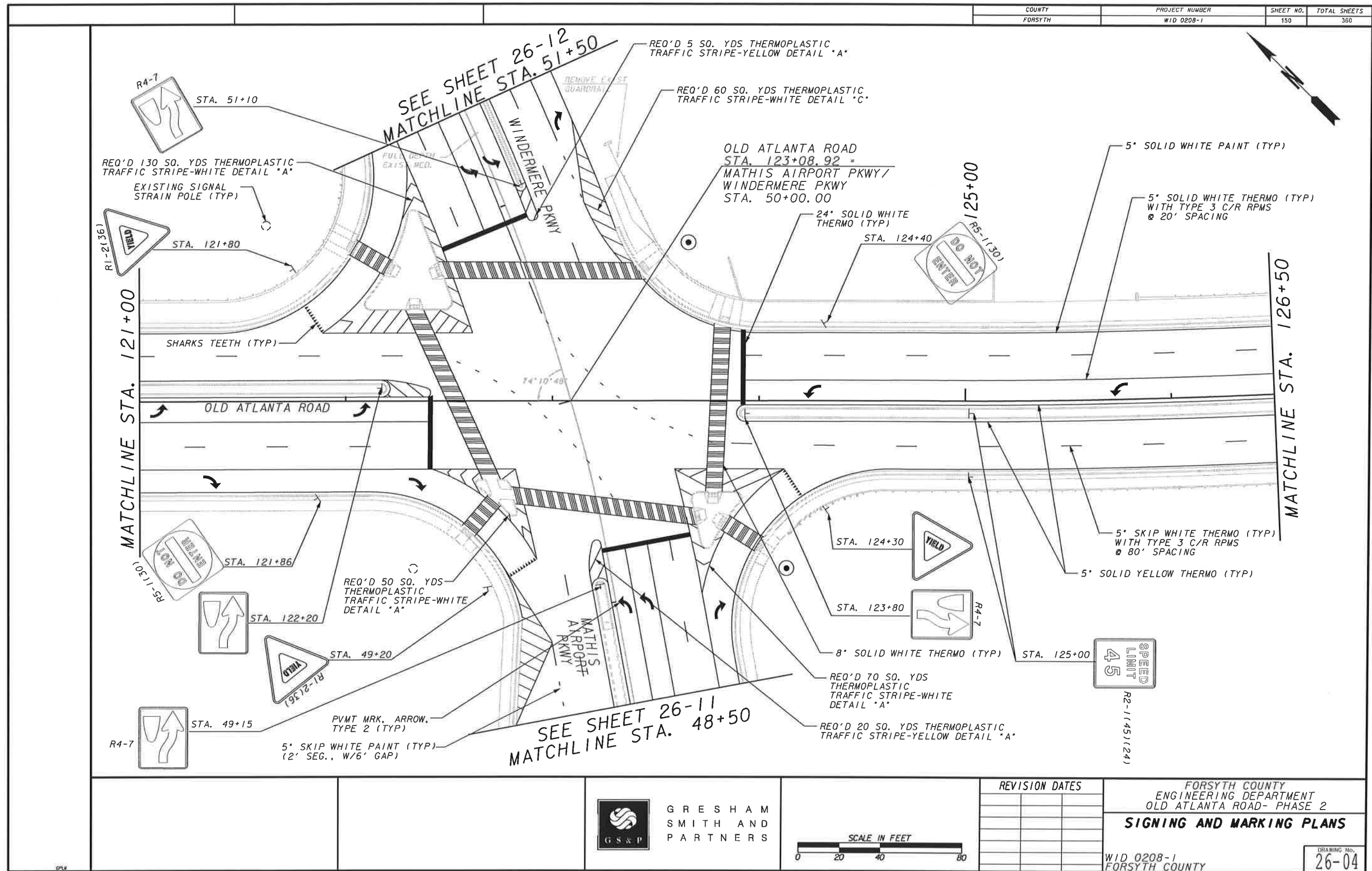
COUNTY	PROJECT NUMBER	SHEET NO.	TOTAL SHEETS
FORSYTH	WID 0208-1	149	360

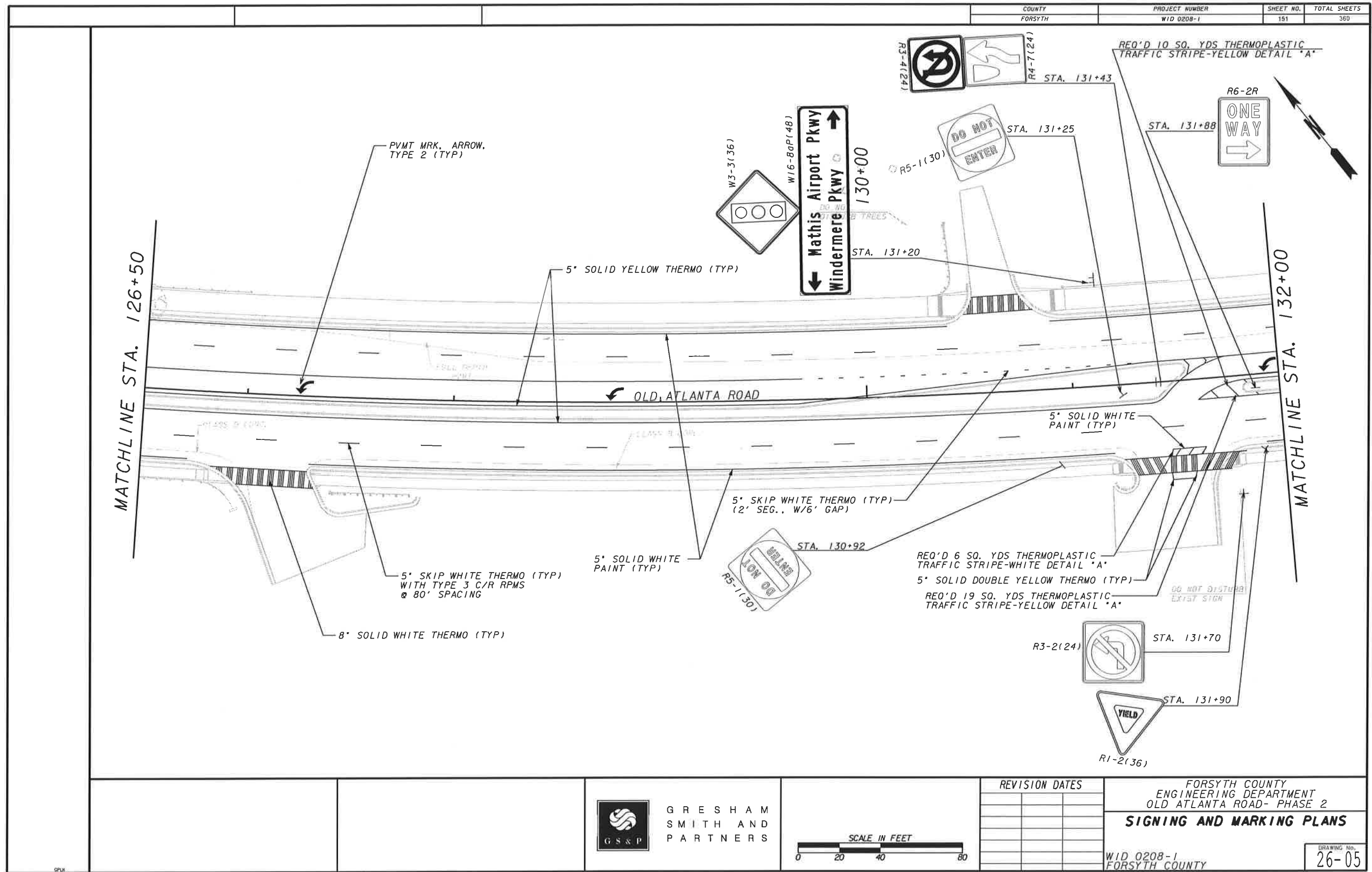
 GRESHAM
SMITH AND
PARTNERS

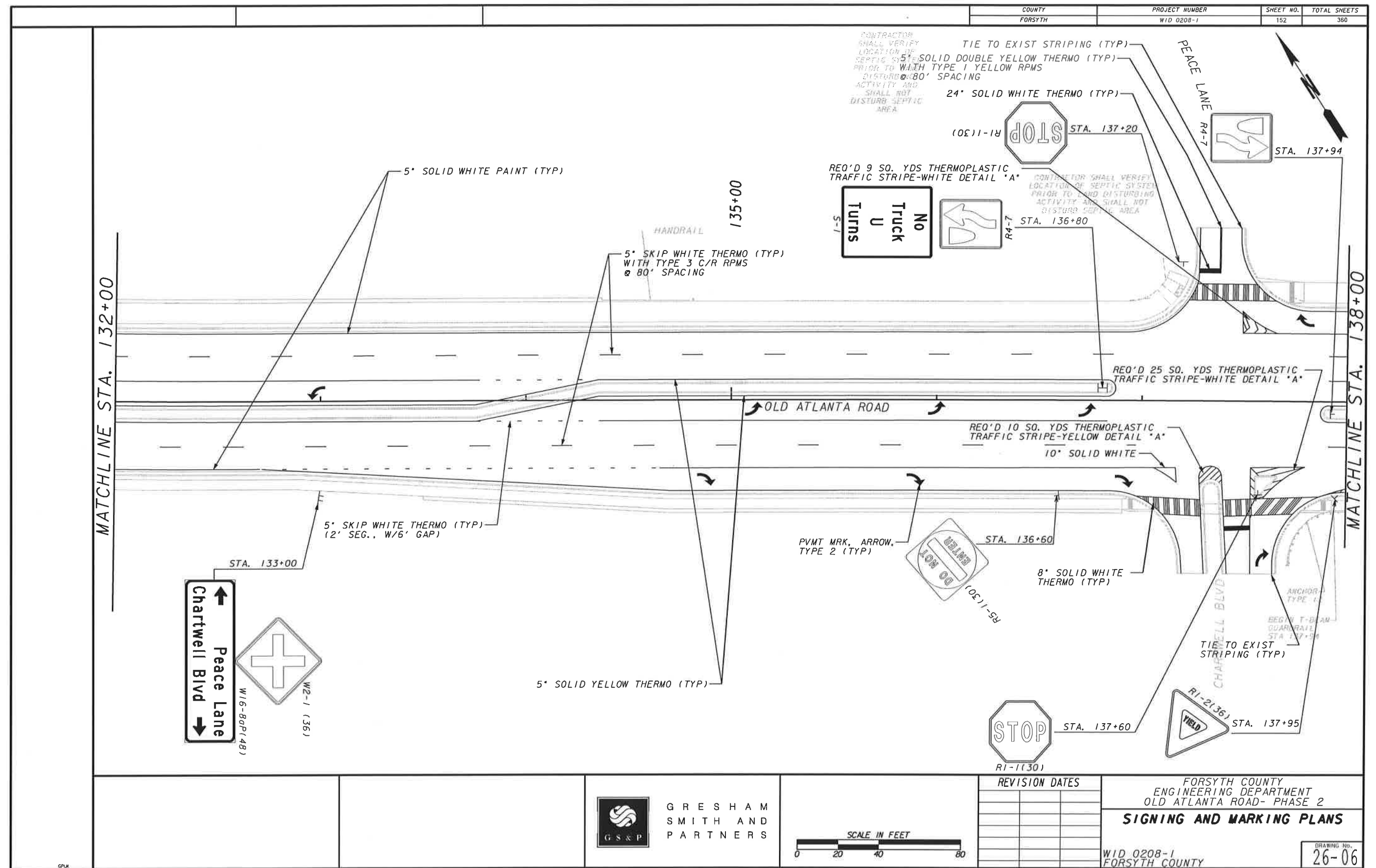


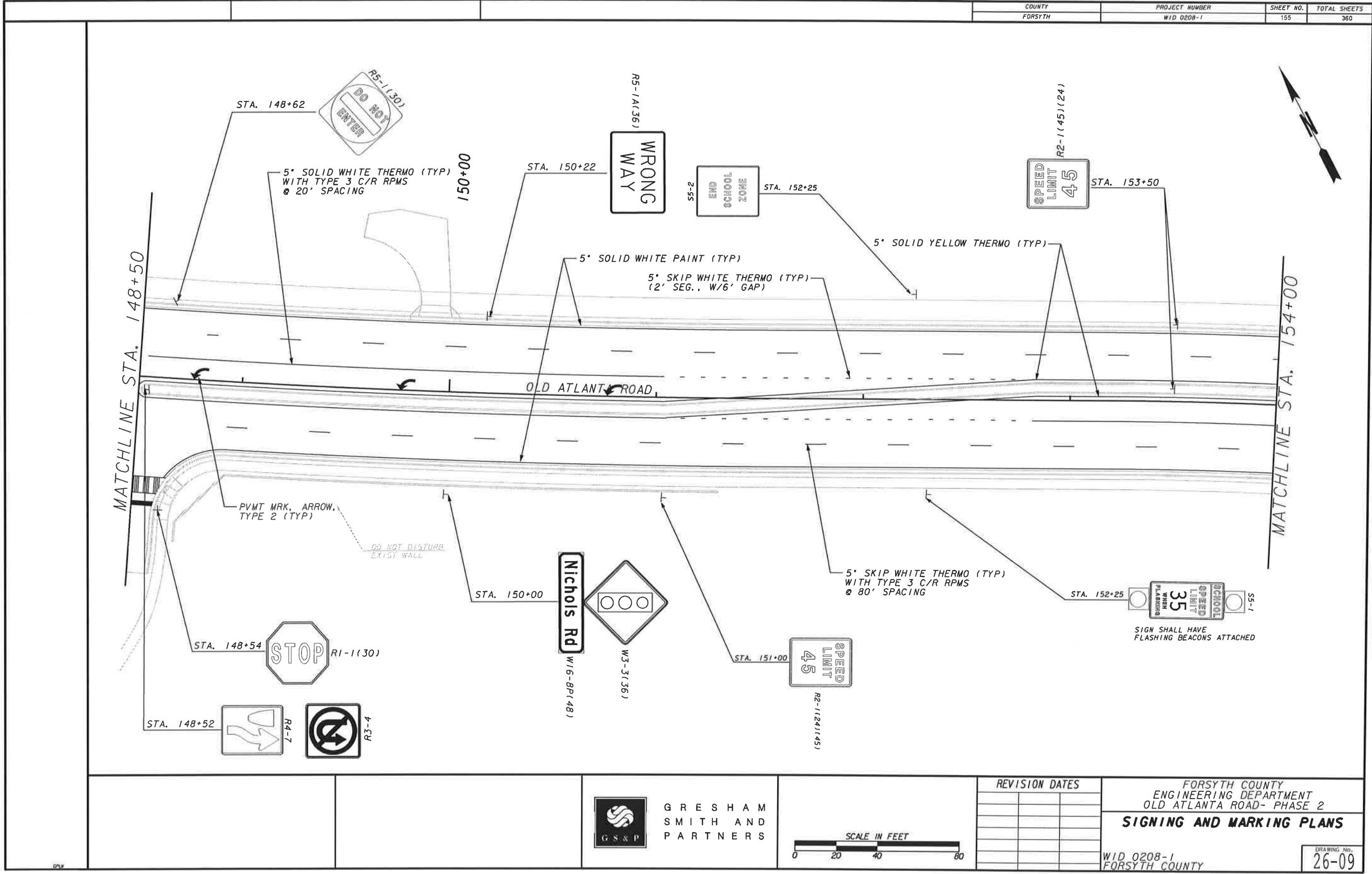
REVISION DATES	

FORSYTH COUNTY
ENGINEERING DEPARTMENT
OLD ATLANTA ROAD- PHASE 2
SIGNING AND MARKING PLANS
WID 0208-1
FORSYTH COUNTY
DRAWING NO.
26-03









GRESHAM
SMITH AND
PARTNERS

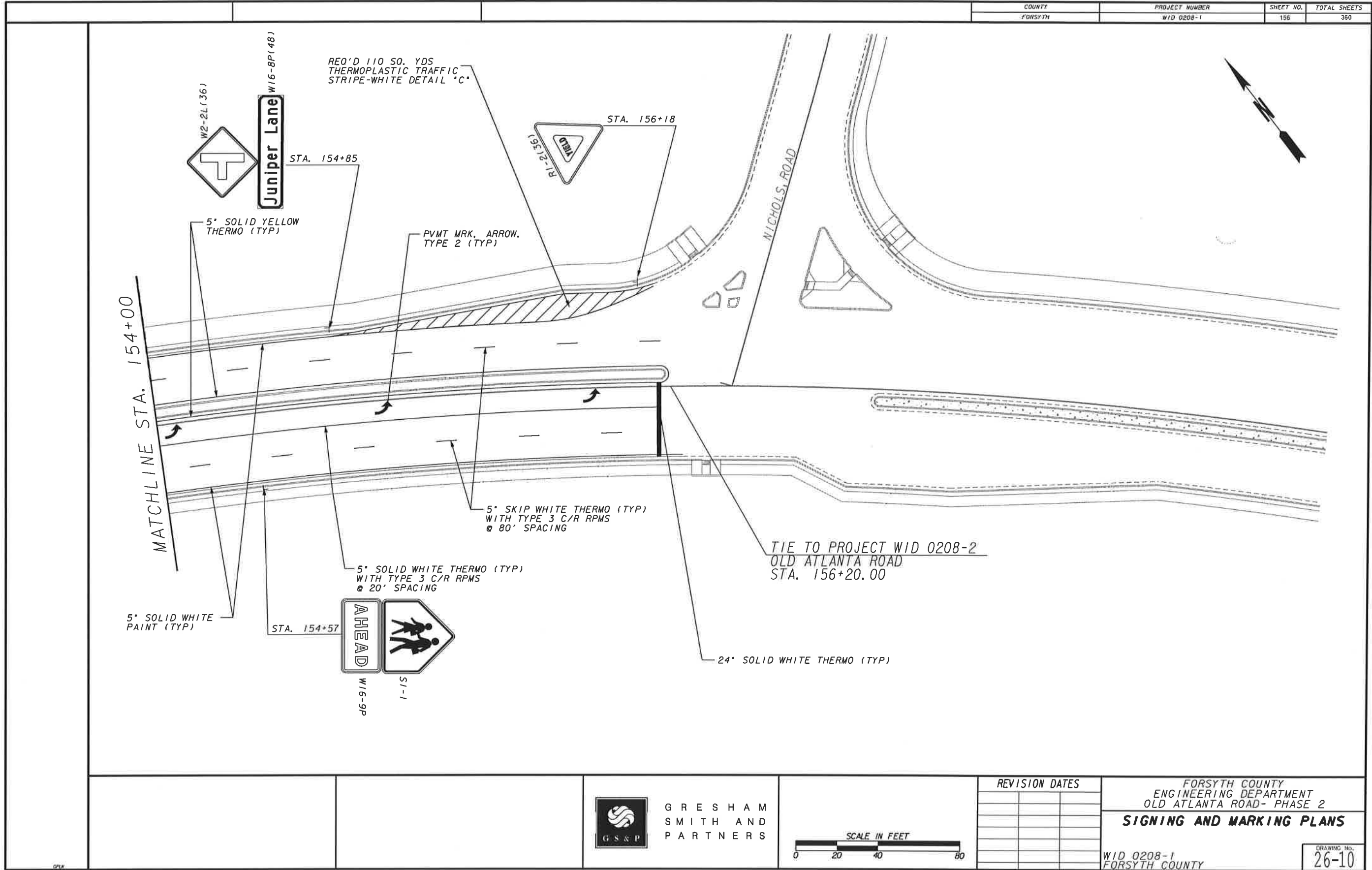


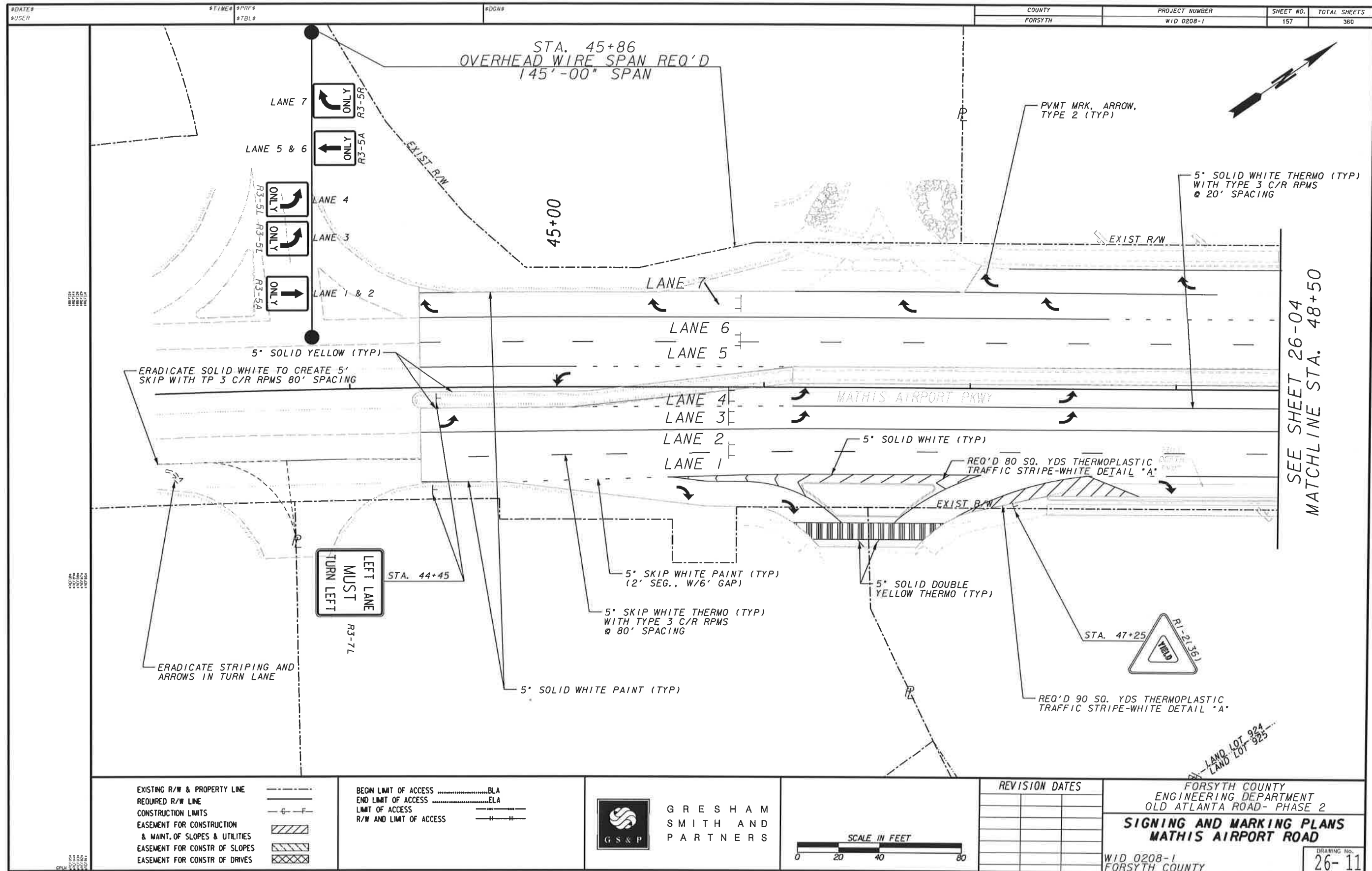
REVISION DATES

FORSYTH COUNTY
ENGINEERING DEPARTMENT
OLD ATLANTA ROAD- PHASE 2
SIGNING AND MARKING PLANS

WID 0208-1
FORSYTH COUNTY

DRAWING NO.
26-09

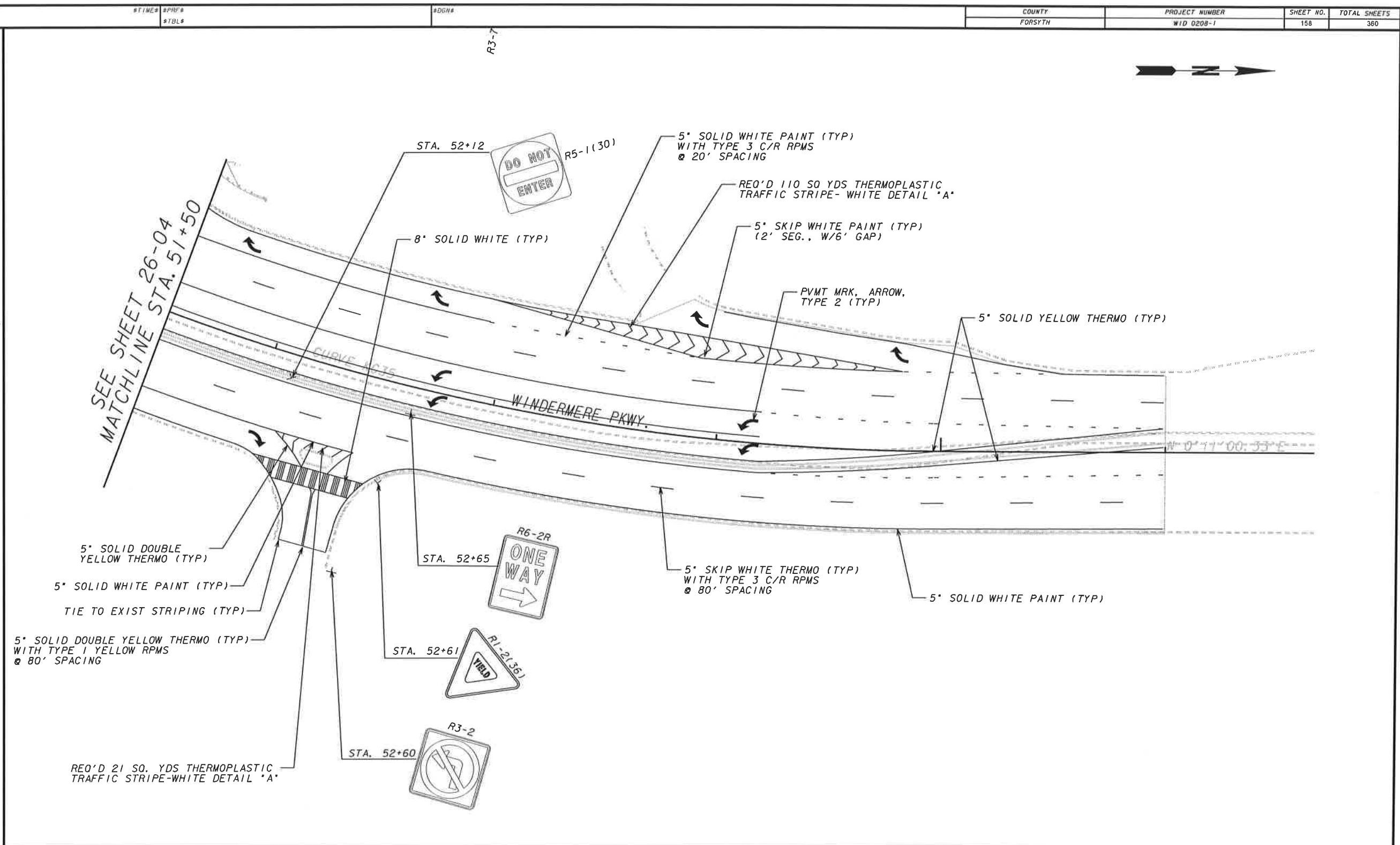




WID 0208-1
WID 0208-1
WID 0208-1

WID 0208-1
WID 0208-1
WID 0208-1

WID 0208-1
WID 0208-1
WID 0208-1



<p>EXISTING R/W & PROPERTY LINE</p> <p>REQUIRED R/W LINE</p> <p>CONSTRUCTION LIMITS</p> <p>EASEMENT FOR CONSTRUCTION & MAINT. OF SLOPES & UTILITIES</p> <p>EASEMENT FOR CONSTR OF SLOPES</p> <p>EASEMENT FOR CONSTR OF DRIVES</p>	<p>BEGIN LIMIT OF ACCESS</p> <p>END LIMIT OF ACCESS</p> <p>LIMIT OF ACCESS</p> <p>R/W AND LIMIT OF ACCESS</p>	<p>GRESHAM SMITH AND PARTNERS</p>	<p>SCALE IN FEET</p> <p>0 20 40 80</p>	<p>REVISION DATES</p>	<p>FORSYTH COUNTY ENGINEERING DEPARTMENT OLD ATLANTA ROAD- PHASE 2</p> <p>SIGNING AND MARKING PLANS WINDERMERE PKWY</p> <p>WID 0208-1 FORSYTH COUNTY</p> <p>DRAWING No. 26-12</p>
---	---	-----------------------------------	--	-----------------------	---