

EXISTING R/W & PROPERTY LINE  
REQUIRED R/W LINE  
CONSTRUCTION LIMITS  
EASEMENT FOR CONSTRUCTION & MAINT. OF SLOPES & UTILITIES  
EASEMENT FOR CONSTR OF SLOPES  
EASEMENT FOR CONSTR OF DRIVES

BEGIN LIMIT OF ACCESS .....BLA  
END LIMIT OF ACCESS .....ELA  
LIMIT OF ACCESS  
R/W AND LIMIT OF ACCESS

GRESHAM  
SMITH AND  
PARTNERS

SCALE IN FEET  
0 20 40 80

REVISION DATES


FORSYTH COUNTY  
ENGINEERING DEPARTMENT

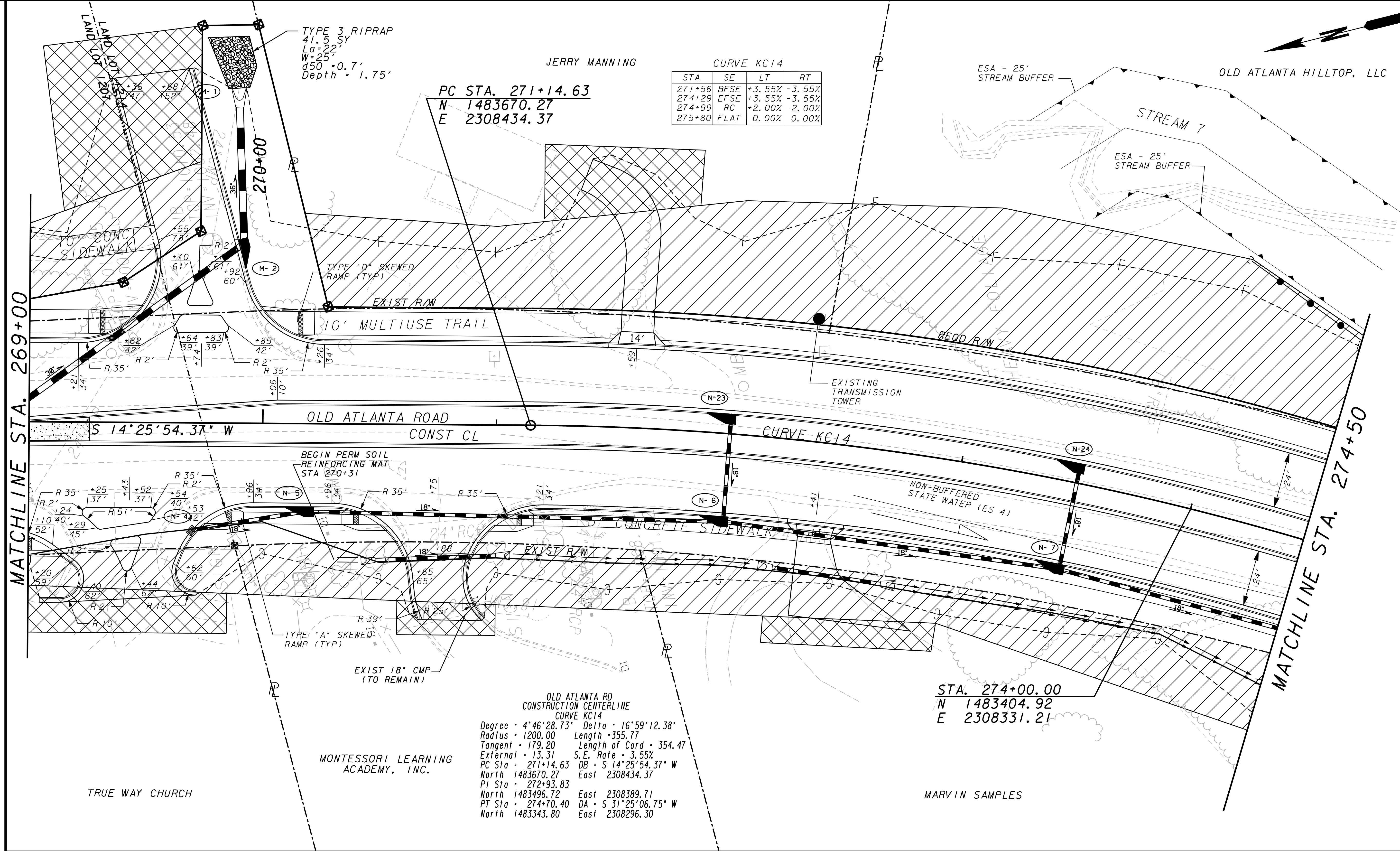
**MAINLINE PLAN**

WID 0208-1 (PHASE 4)  
FORSYTH COUNTY

DRAWING No.  
**13-02**





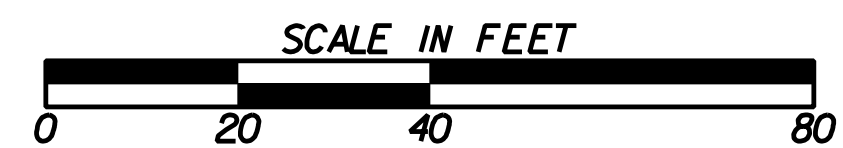


EXISTING R/W & PROPERTY LINE  
REQUIRED R/W LINE  
CONSTRUCTION LIMITS  
EASEMENT FOR CONSTRUCTION  
& MAINT. OF SLOPES & UTILITIES  
EASEMENT FOR CONSTR OF SLOPES  
EASEMENT FOR CONSTR OF DRIVES

BEGIN LIMIT OF ACCESS .....BLA  
END LIMIT OF ACCESS .....ELA  
LIMIT OF ACCESS  
R/W AND LIMIT OF ACCESS



GRESHAM  
SMITH AND  
PARTNERS



REVISION DATES

FORSYTH COUNTY  
ENGINEERING DEPARTMENT

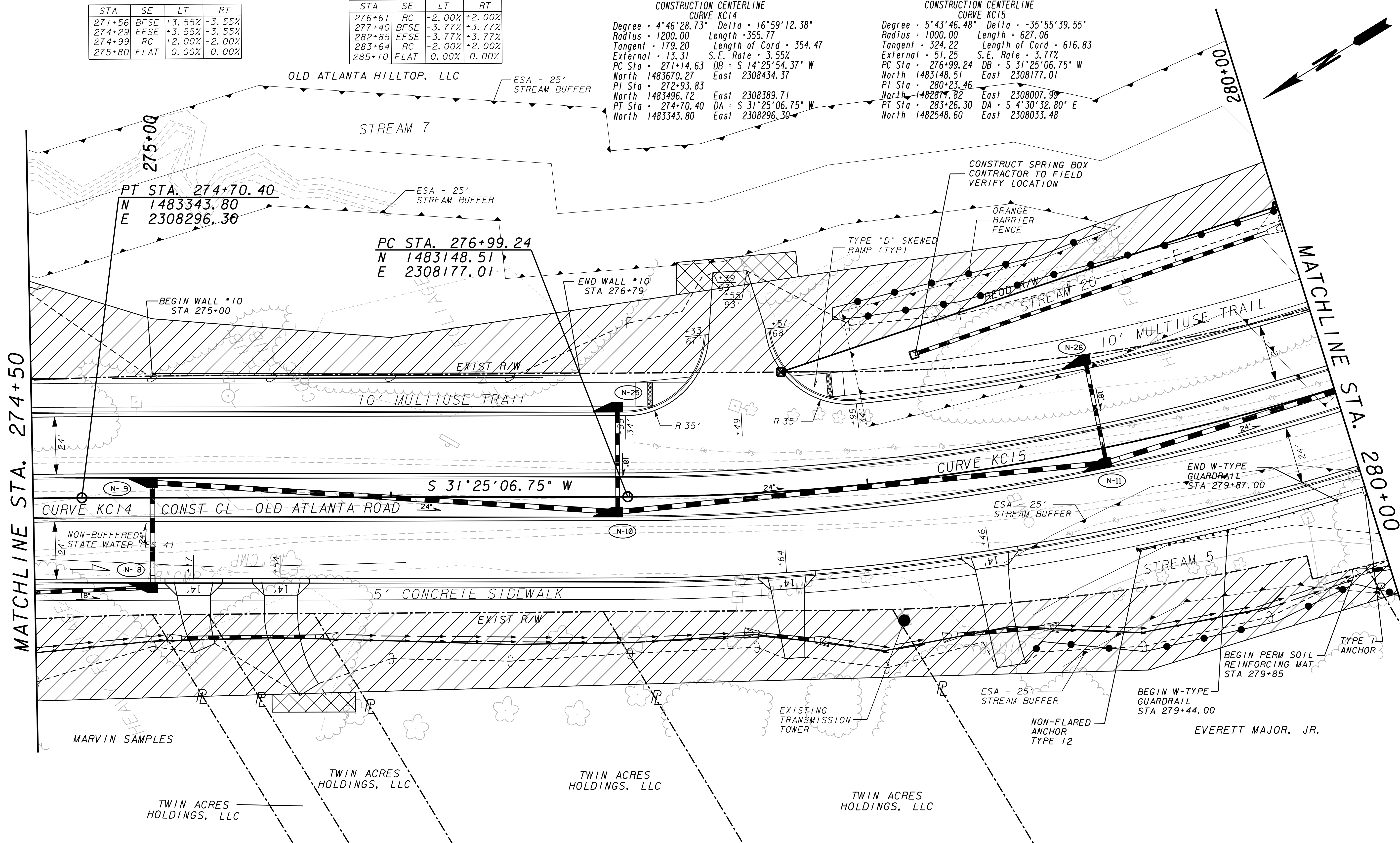
MAINLINE PLAN




WID 0208-1 (PHASE 4)  
FORSYTH COUNTY

DRAWING No.  
13-04



OLD ATLANTA RD  
 CONSTRUCTION CENTERLINE  
 CURVE KC15  
 Degree = 5°43'46.48" Delta = -35°55'39.55"  
 Radius = 1000.00 Length = 627.06  
 Tangent = 324.22 Length of Cord = 616.83  
 External = 51.25 S.E. Rate = 3.77%  
 PC Sta = 276+99.97 DB = S 31°25'06.75" W  
 North 1483148.51 East 2308177.01  
 PI Sta = 280+23.46  
 North 1482871.82 East 2308007.99  
 PT Sta = 283+26.30 DA = S 4°30'32.80" E  
 North 1482548.60 East 2308033.48



EXISTING R/W & PROPERTY LINE	----
REQUIRED R/W LINE	=====
CONSTRUCTION LIMITS	— C — F —
EASEMENT FOR CONSTRUCTION & MAINT. OF SLOPES & UTILITIES	
EASEMENT FOR CONSTR OF SLOPES	
EASEMENT FOR CONSTR OF DRIVES	

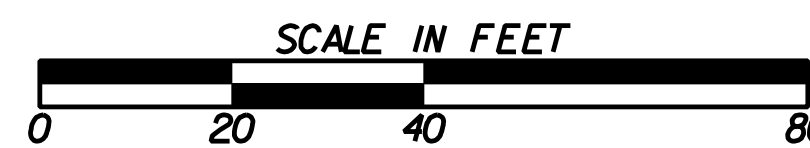
```

BEGIN LIMIT OF ACCESS .....BLA
END LIMIT OF ACCESS .....ELA
LIMIT OF ACCESS                _____
R/W AND LIMIT OF ACCESS        _____

```



G R E S H A M  
S M I T H    A N D  
P A R T N E R S



### REVISION DATES


FORSYTH COUNTY  
ENGINEERING DEPARTMENT

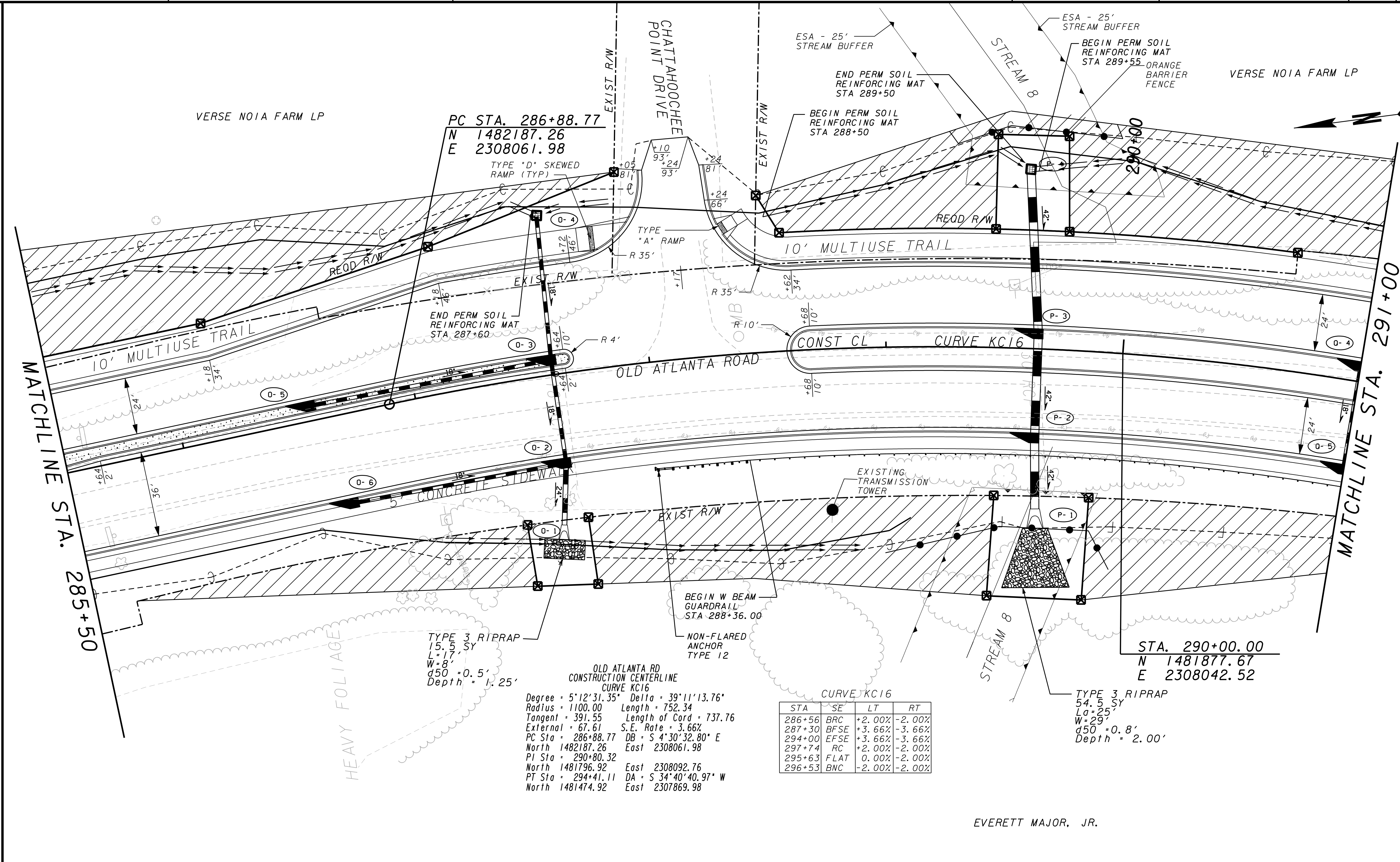
## MAINLINE PLAN

WID 0208-1 (PHASE 4)  
FORSYTH COUNTY

DRAWING No.  
13-05







OLD ATLANTA RD  
CONSTRUCTION CENTERLINE  
CURVE KC16  
Degree = 5°12'31.35" Delta = 39°11'13.76"  
Radius = 1100.00 Length = 752.34  
Tangent = 391.55 Length of Cord = 737.76  
External = 67.61 S.E. Rate = 3.66%  
PC Sta = 286+88.77 DB = S 4°30'32.80" E  
North 1482187.26 East 2308061.98  
PI Sta = 290+80.32  
North 1481796.92 East 2308092.76  
PT Sta = 294+41.11 DA = S 34°40'40.97" W  
North 1481474.92 East 2307869.98

STA	SE	LT	RT
286+56	BRC	+2.00%	-2.00%
287+30	BFSE	+3.66%	-3.66%
294+00	EFSE	+3.66%	-3.66%
297+74	RC	+2.00%	-2.00%
295+63	FLAT	0.00%	-2.00%
296+53	BNC	-2.00%	-2.00%

EXISTING R/W & PROPERTY LINE

REQUIRED R/W LINE

CONSTRUCTION LIMITS

EASEMENT FOR CONSTRUCTION & MAINT. OF SLOPES & UTILITIES

EASEMENT FOR CONSTR OF SLOPES

EASEMENT FOR CONSTR OF DRIVES

BEGIN LIMIT OF ACCESS .....BLA

END LIMIT OF ACCESS .....ELA

LIMIT OF ACCESS

R/W AND LIMIT OF ACCESS

GRESHAM  
SMITH AND  
PARTNERS

SCALE IN FEET

0 20 40 80

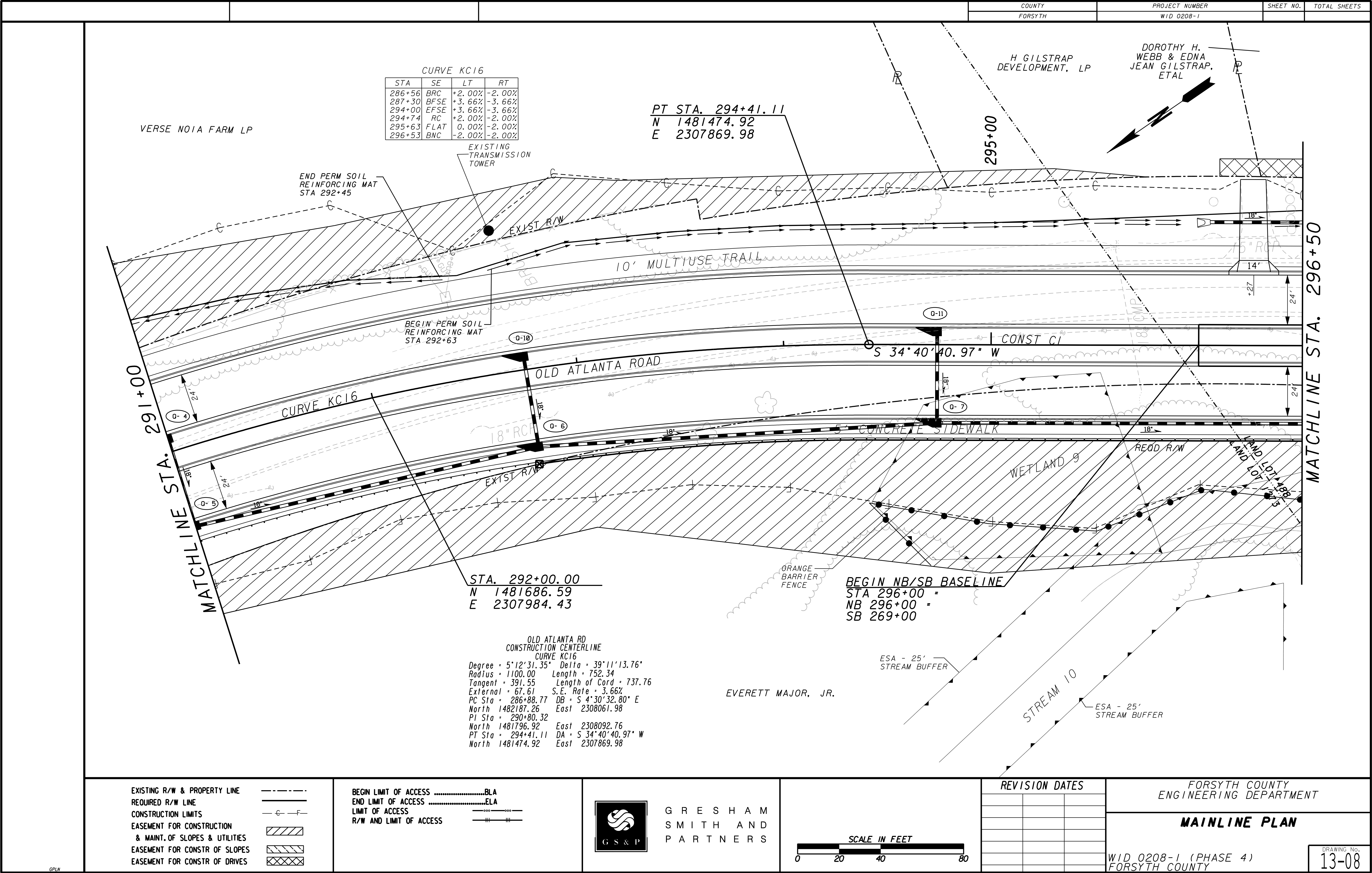
REVISION DATES


FORSYTH COUNTY  
ENGINEERING DEPARTMENT

MAINLINE PLAN

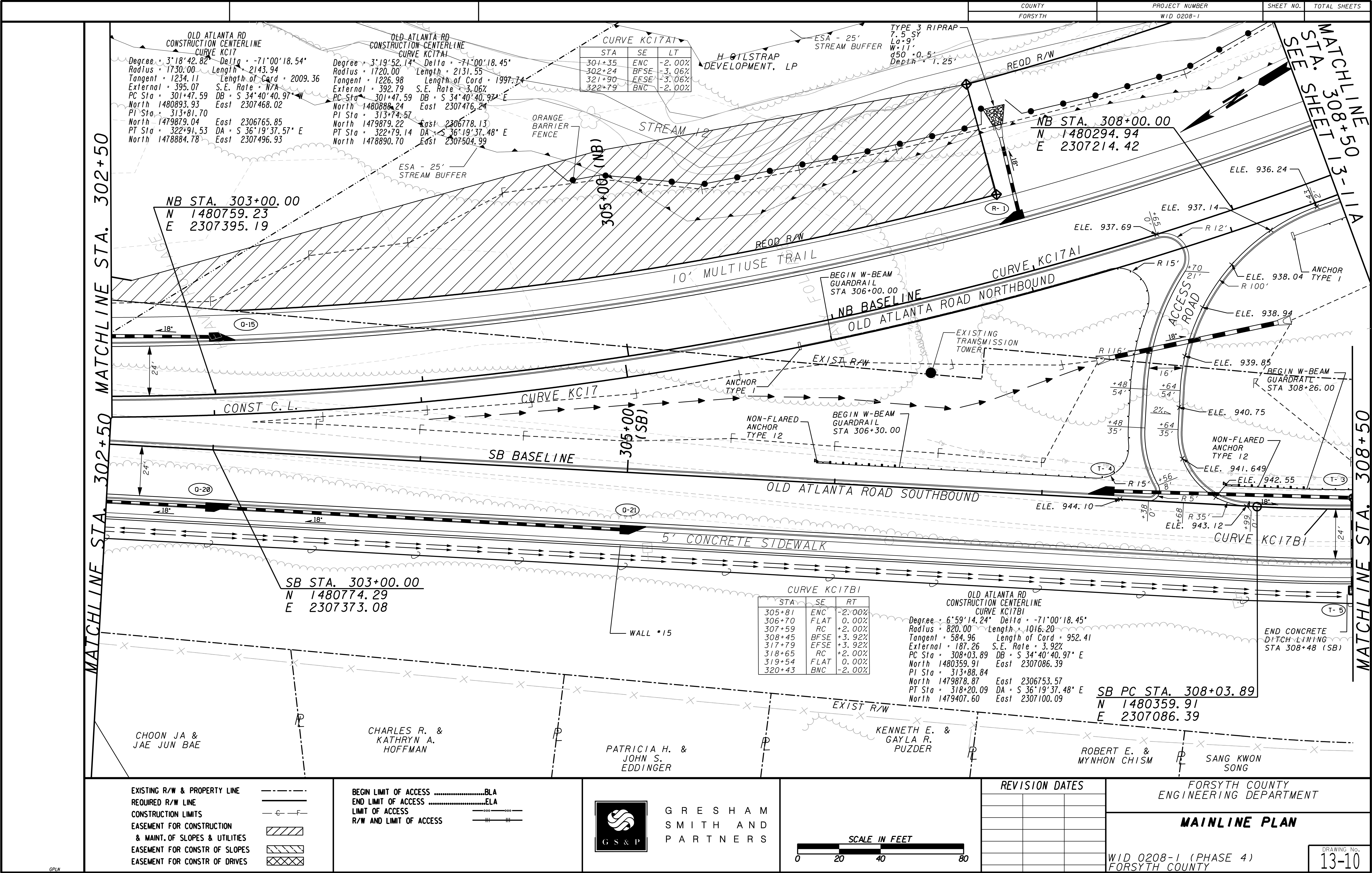
WID 0208-1 (PHASE 4)  
FORSYTH COUNTY

DRAWING No.  
13-07



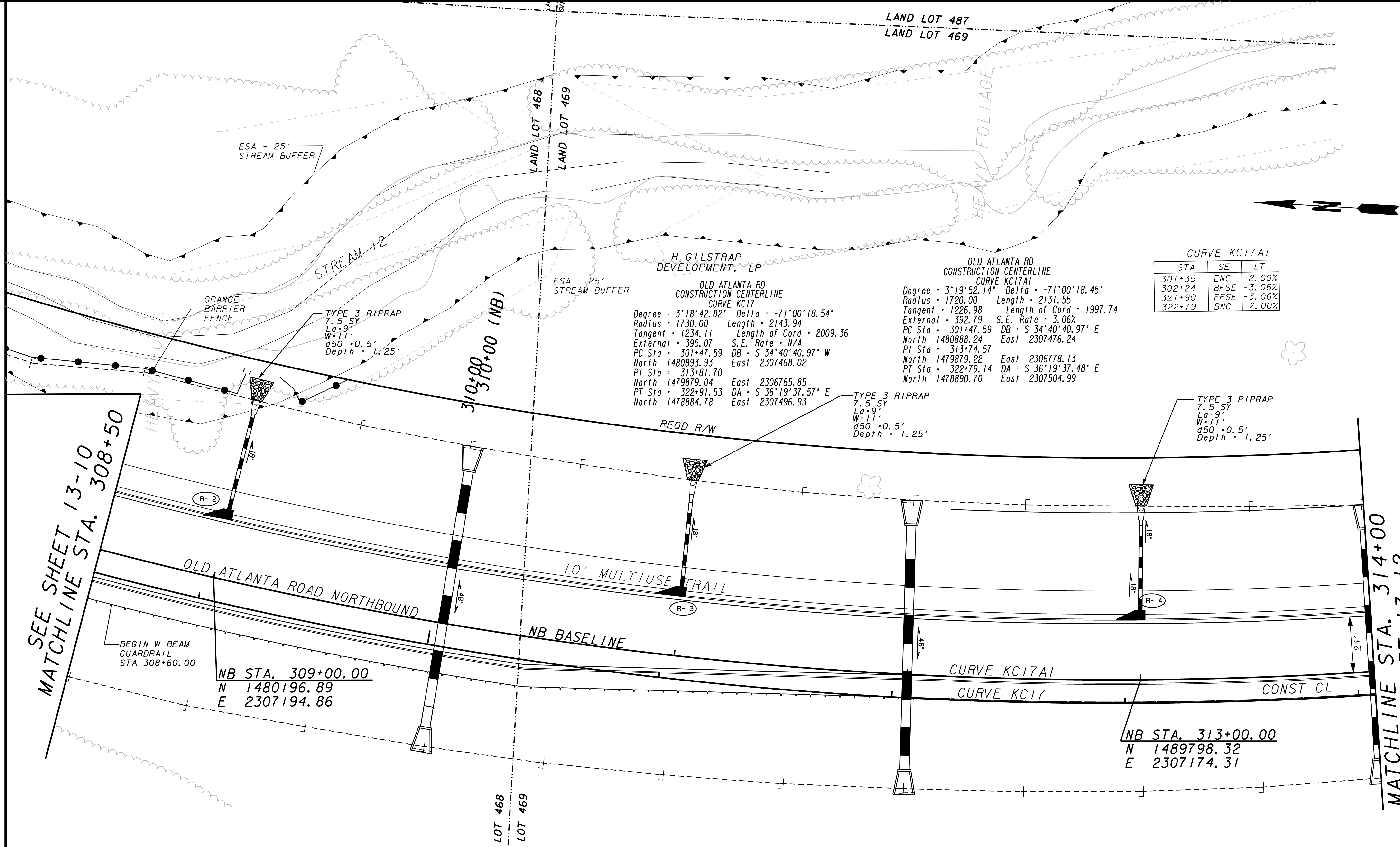










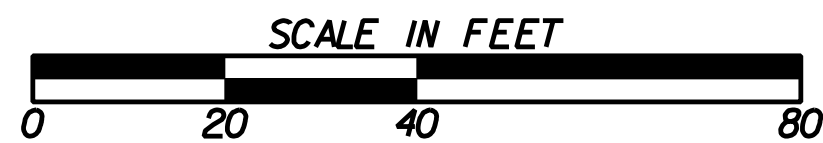


EXISTING R/W & PROPERTY LINE  
REQUIRED R/W LINE  
CONSTRUCTION LIMITS  
EASEMENT FOR CONSTRUCTION  
& MAINT. OF SLOPES & UTILITIES  
EASEMENT FOR CONSTR OF SLOPES  
EASEMENT FOR CONSTR OF DRIVES

BEGIN LIMIT OF ACCESS .....BLA  
END LIMIT OF ACCESS .....ELA  
LIMIT OF ACCESS  
R/W AND LIMIT OF ACCESS



GRESHAM  
SMITH AND  
PARTNERS



REVISION DATES

FORSYTH COUNTY  
ENGINEERING DEPARTMENT

MAINLINE PLAN

WID 0208-1 (PHASE 4)  
FORSYTH COUNTY

DRAWING No.  
13-11A

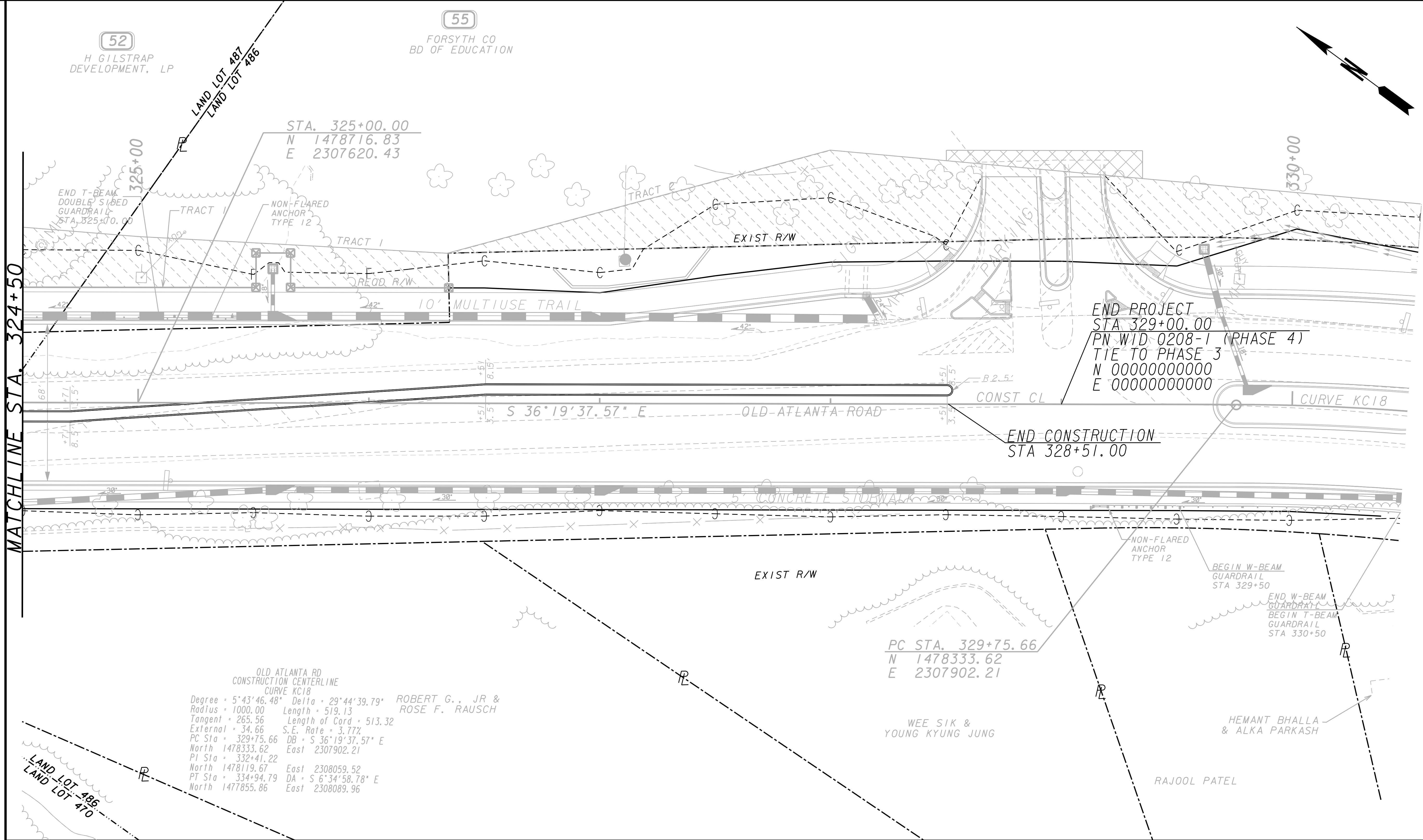










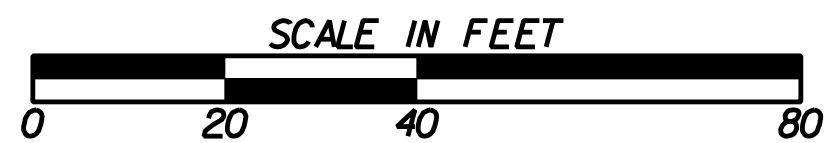


EXISTING R/W & PROPERTY LINE  
REQUIRED R/W LINE  
CONSTRUCTION LIMITS  
EASEMENT FOR CONSTRUCTION  
& MAINT. OF SLOPES & UTILITIES  
EASEMENT FOR CONSTR OF SLOPES  
EASEMENT FOR CONSTR OF DRIVES

BEGIN LIMIT OF ACCESS .....BLA  
END LIMIT OF ACCESS .....ELA  
LIMIT OF ACCESS  
R/W AND LIMIT OF ACCESS



GRESHAM  
SMITH AND  
PARTNERS



REVISION DATES

FORSYTH COUNTY  
ENGINEERING DEPARTMENT

MAINLINE PLAN

WID 0208-1 (PHASE 4)  
FORSYTH COUNTY

DRAWING No.  
13-14

