

# Community Facilities





## Introduction

Facilities and services shape a community's foundation. Essential services include fire and police protection, water supply and distribution, wastewater treatment as well as solid waste management. In addition, parks and recreational services fulfill a necessary role in improving the quality of life within the county. These facilities affect growth since development must have access to a network of supporting infrastructure such as potable water and waste disposal. The availability of infrastructure and community services can alter a community's surroundings by adding to the developable land supply or postponing, perhaps even precluding, development of certain land.

The purpose of this update element is to examine the impacts such infrastructure has on the county's land use and to provide an overview of available county facilities and services within the community. Following each inventory is an assessment of the adequacy of these facilities to meet the current and future needs of the county.

## Inventory and Assessment

### Water and Sewer Facilities

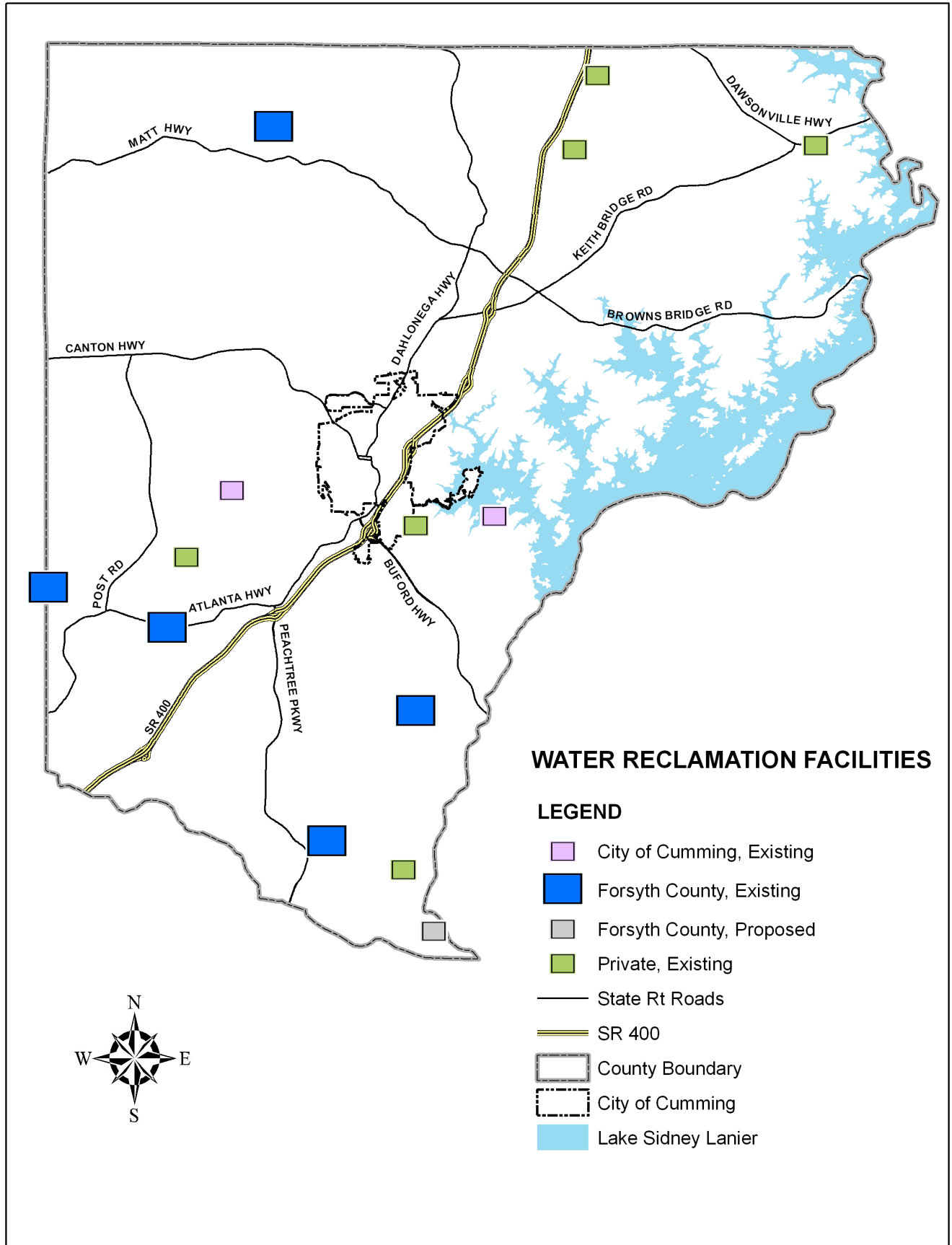
The Forsyth County Water and Sewer Department is in charge of the county's water supply and sewer treatment. The department operates from multiple facilities. The county administration building houses the director and the administrative and engineering staff, along with the commercial services group that includes customer service, billing and meter services. The field operations center on County Way accommodates the field and maintenance staff and is used as the workshop, meter assembly area, warehouse and work area for the field operations personnel. The Forsyth County water treatment plant on Antioch Road houses its management and operations staff. There are six water reclamation facilities owned by Forsyth County: Fowler, Dick's Creek, Windermere, James Creek, The Manor and Parkstone as illustrated in Figure 1. Please note that Windermere and James Creek are designated by the same icon on the map due to their proximity. The water treatment plant and the six reclamation facilities are operated on a contractual basis through private corporations.

### Water Supply and Treatment

In 1987, the City of Cumming and Forsyth County entered into a formal agreement that defined the service areas of each water system as indicated in Figure 2. The contract also established guidelines for a wholesale water user's agreement for the city to supply water to Forsyth County on a wholesale basis. This agreement was modified in 1997 and will expire in 2012. Presently, the county is required under this agreement to annually buy the amount of water that the county purchased in 1997, or 1.628 billion gallons per year of treated water.

In April 2000, the county brought online the Antioch water treatment plant (WTP), which is currently permitted to treat 16 million gallons per day (MGD) in a 24-hour period, not to exceed a monthly average of 14 MGD. In 2009, the WTP produced an average of 5.89 MGD with a daily maximum of 13.54 MGD. The raw water treated at this plant is supplied through the Lake Sidney Lanier intake owned and operated by the City of Cumming. The county has approximately 44,000 water customers and operates roughly 870 miles of water lines throughout the county.

FIGURE 1: WATER RECLAMATION FACILITIES OF FORSYTH COUNTY



There are three elevated tanks and five ground tanks that provide 19 MG of storage as illustrated in Figure 2.

The raw water pump station delivers water to a 20 MG raw water tank at the WTP. The WTP is operated to meet the demands of consumers and to fill the storage tanks in the distribution system.

**Water Supply Assessment**

Currently the county is taking measures to ensure water supply for the future through a treatment plant expansion, conservation efforts and researching potential new raw water supply sources. A 12 MGD expansion to the WTP commenced in May 2010 and has a twenty-four month construction schedule.

**Sewerage System and Wastewater Treatment**

By the end of 2009, Forsyth County served 14,516 sewer customers. Sewer customer growth is continuing at a slow but steady pace, with around fifty new accounts per month.

**Existing Sewer Service Area**

The Forsyth County sewer service area encompasses approximately 80% of the county, as shown in Figure 2. The major drainage basins within the service area include the following:

- Big Creek Basin, which is located west of the Cumming service area and west of SR 141 to the county line.
- Chattahoochee River Basin, which is located south of the Cumming service area to the border of Fulton County and east of SR 141 to the border of Gwinnett County.
- Etowah River Basin, which is located in the northwestern corner of the county with most of the area north of SR 369.
- Lake Lanier Basin, which is located in the northeastern quadrant of the county with SR 306 splitting the majority of the area.
- Settingdown Creek Basin, which is split by the Cumming service area. A portion of this basin is located north of the Cumming service area and includes SR 400 and SR 9. The remaining portion is located west of the Cumming service area to the boundary of Cherokee County and is roughly south of SR 369 and north of SR 20.

Forsyth County provides sewer service to most of its service area with the exception of the Lake Lanier basin. Through a series of lift stations, force mains and gravity lines, most sewer flow, regardless of basin, is brought back to the Chattahoochee River Basin for eventual discharge. See Figure 3 for current and planned lift station and sprayfield locations.

**Existing Wastewater Treatment**

Forsyth County owns six wastewater treatment facilities. The county also has contractual agreements for wastewater treatment with Fulton County and the City of Cumming as well as ownership of capacity in one private treatment facility. As part of these arrangements, Forsyth County collects the wastewater from its customers and discharges it into designated sewers which convey the wastewater to the appropriate treatment facility. Table 1 summarizes these agreements with Figure 1 indicating facility locations throughout the county, except for Johns Creek and Big Creek since these facilities are within Fulton County.

FIGURE 2: WATER FACILITIES AND SERVICE AREAS OF FORSYTH COUNTY

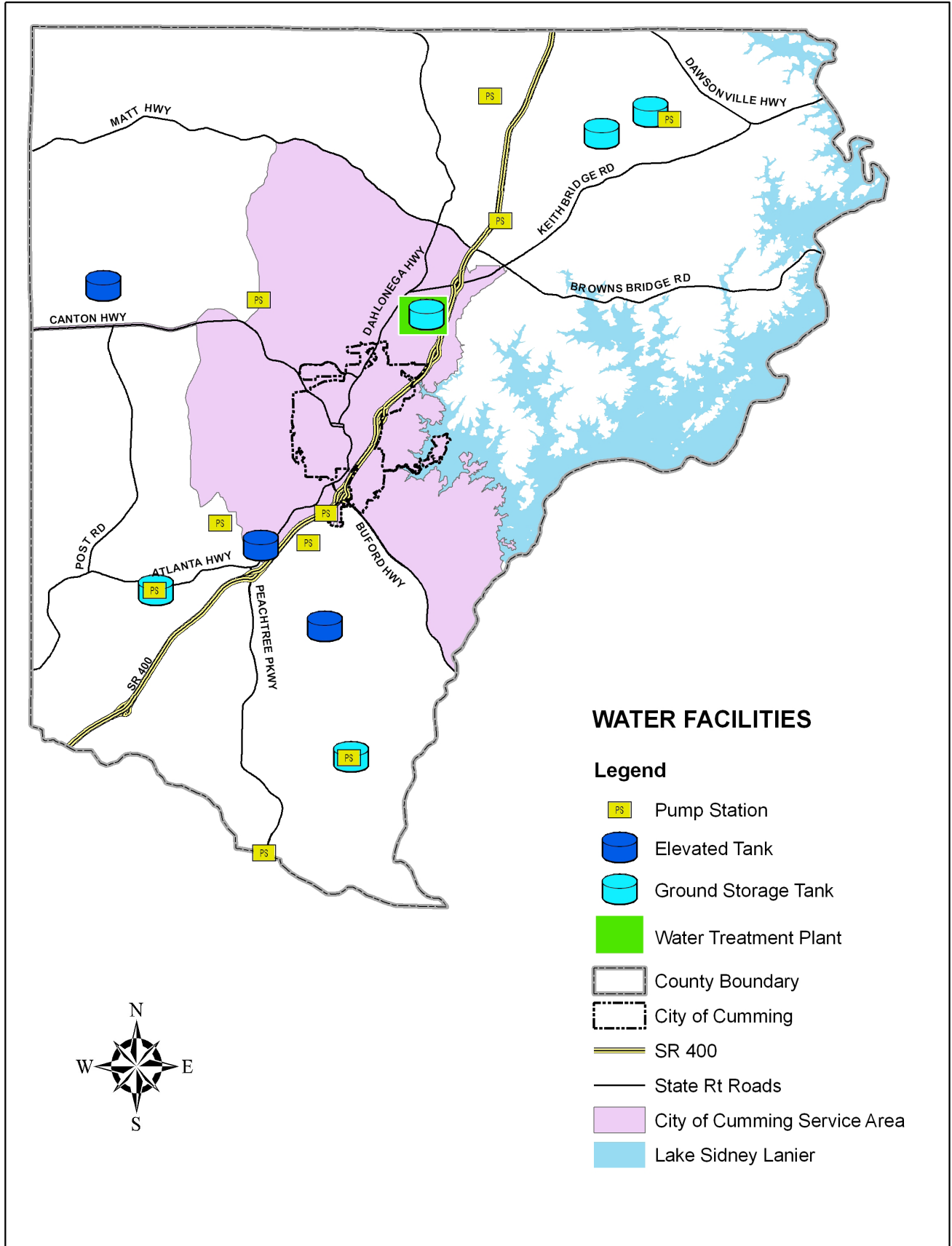


TABLE 1: EXISTING WASTEWATER TREATMENT AGREEMENTS

System or Facility	Contract Limit or Capacity Owned (MGD)	Current Monthly Average-Day Flow in Forsyth County (MGD)
Fulton County		
Johns Creek	1.2	0.58
Big Creek	1.25	1.04
Total Fulton County	2.45	1.62
City of Cumming	0.5	0.172
The Hamptons*	0.5	0.168

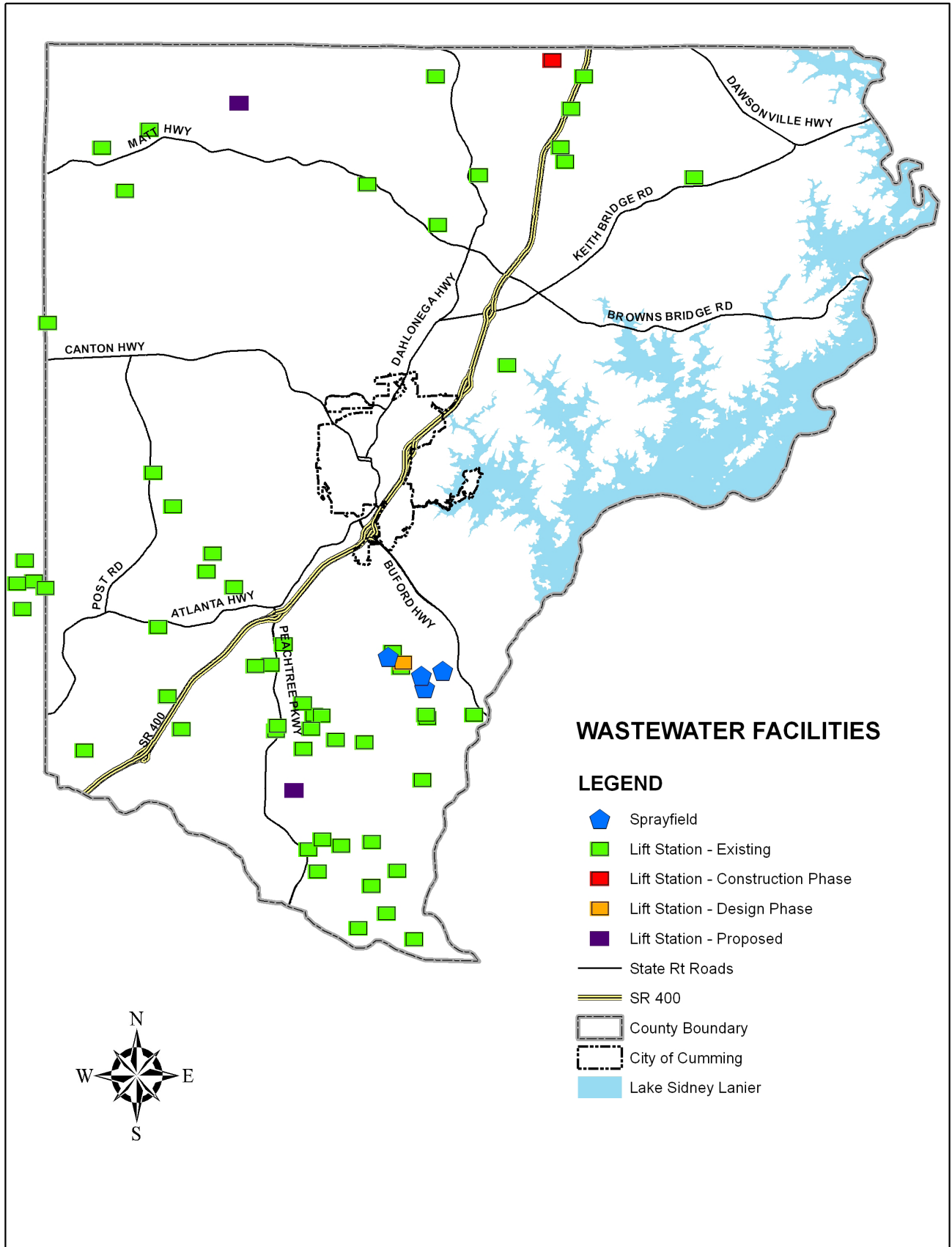
In addition to the contractual agreements shown in Table 1, privately owned treatment facilities also treat wastewater in several residential developments. These facilities comprise a small amount of the existing capacity in the county. There are eight privately or city owned systems including Bethelview, Habersham on Lanier, The Hamptons, Lanier Beach South, McKinley Manor, Mountain Ridge, Old Atlanta Club and Polo Golf and Country Club; their permitted capacities are identified in Table 2 with locations illustrated in Figure 1. These facilities manage their treated effluent through reuse on golf courses and landscaped areas or through land application on dedicated sites.

TABLE 2: PRIVATELY OWNED OR CITY OF CUMMING WASTEWATER TREATMENT FACILITIES SERVING RESIDENTS OF FORSYTH COUNTY

Facility	Permitted Maximum Monthly Average- Day Flow Capacity (MGD)
Bethelview*	8.0
Habersham on Lanier	0.11
The Hamptons	0.275
Lanier Beach South*	0.038
McKinley Manor	0.01566
Mountain Ridge	0.0576
Olde Atlanta Club	0.2625
Polo Golf and Country Club	0.338

The county opened its first water reclamation facility (WRF), the Fowler WRF, in 2004. This facility is constructed to treat up to 2.5 MGD. The effluent from this facility is reclaimed for irrigation uses on school campuses, a golf course, county parks and other landscaped areas. Water that is not reused is land applied on the county-owned Threatt site, located in the southeastern corner of Forsyth County along the Chattahoochee River. Forsyth County has applied for a permit to discharge treated effluent into the Chattahoochee River and is currently working through the lengthy permitting process. At this time, the Fowler WRF is permitted by the Georgia Environmental Protection Division (EPD) to treat 1.25 MGD of wastewater on a monthly average basis. See Table 3 for a list of county owned wastewater treatment facilities with their permitted

FIGURE 3: WASTEWATER FACILITIES OF FORSYTH COUNTY



capacities.

TABLE 3: COUNTY OWNED WASTEWATER TREATMENT FACILITIES

System or Facility	Contract Limit or Capacity Owned (MGD)	Monthly Average-Day Flow Capacity (MGD)
Dick's Creek	0.76	0.53
Fowler	1.25	0.883
James Creek	0.25	0.238
The Manor	0.5	0.065
Parkstone	0.1	0.05
Windermere	0.69	0.314

**Sewer System Assessment**

In an area containing predominantly residential and commercial facilities, as is the case in the county’s sewer service area, the wastewater flows can be directly related to the population. Flows from industrial facilities are not easily related to the population. However, industrial facilities that could generate large wastewater flows are not included in the Forsyth County land use plan. Also, with the concern for a potential water supply shortage in the region, adding any large volume water users is not expected and would require thorough evaluation. If any industrial facilities chose to locate in the sewer service area, the availability of sewer and treatment capacity would need to be evaluated on a case-by-case basis.

**Future Wastewater Flows to Sewer Systems**

The 2009 Sewer System Master Plan estimates a county service area population of 116,508, comprised of 41,169 residential households. There were 14,442 county residential sewer customers, or 35% of the total number of households. Private sewer plants served approximately 2,832 households, bringing the total percentage of households to 42% receiving service. The remainder of the population is treated by on-site treatment systems, primarily septic tanks at individual homes.

Future wastewater flows are estimated under the assumption that 85% of new population growth within the service area will be connected to public sewer. For planning purposes, 270 gallons per day (GPD), inclusive of inflow and infiltration, is used as estimated daily flow for residential units.

The total annual average daily sewer flow in the county sewer service area is expected to increase from 3.85 MGD to 20.67 MGD over the 2030 planning period. However, private systems are expected to continue to play a role in Forsyth County. Over time, these facilities will exceed their useful lives and will likely be connected to the county system.

In August 2009, a sewer system master plan update for the Forsyth County sewer service area was completed. This plan outlines a recommended strategy for the extension and development of the Forsyth County wastewater collection and treatment system to meet future demand.

## Solid Waste Management Facilities

### **Inventory of Waste Disposal**

The Forsyth County Hightower Landfill located on Old Federal Road was closed in July of 2002. Since that time, a privately owned landfill opened its doors to county residents and private haulers for the disposal of household waste, construction and demolition debris and appliances. Forsyth County is host to this private Subtitle D landfill site owned by Advanced Disposal/Federal Road, LLC d/b/a Eagle Point Landfill (EPLF). The site is located on Old Federal Road, adjacent to the closed county landfill site. The total site comprises 700 acres with a 163-acre landfill footprint. The Georgia Environmental Protection (EPD), Land Protection Branch monitors this site. EPLF has the most current federal and state regulatory controls in place to protect the environment. EPLF has two agreements with Forsyth County; one agreement provides a preferential disposal rate for ten years for county directed facilities; the other agreement, as required by state law, provides a host fee to Forsyth County. The host fee paid to Forsyth County is calculated at the rate of \$1 per ton deposited in the landfill site. EPLF also provides the tonnage amount that is deposited in the landfill site to EPD.

In February of 2003, Greenleaf Recycling, LLC established themselves as a privately owned construction and demolition landfill. The landfill will accept appropriate materials from private waste haulers and individual county residents. Greenleaf Landfill has one disposal area for construction and demolition materials and another for “earth-like” products such as plant debris, tree limbs and leaf litter.

This landfill is located on SR 306, adjacent to American Proteins. Greenleaf Recycling, LLC is required by state law to provide a host fee to Forsyth County. The host fee paid to Forsyth County is calculated at the rate of \$1 per ton deposited in the landfill site. Greenleaf Recycling, LLC also provides the tonnage amount that is deposited in the landfill site to EPD.

### **Recycling Collection**

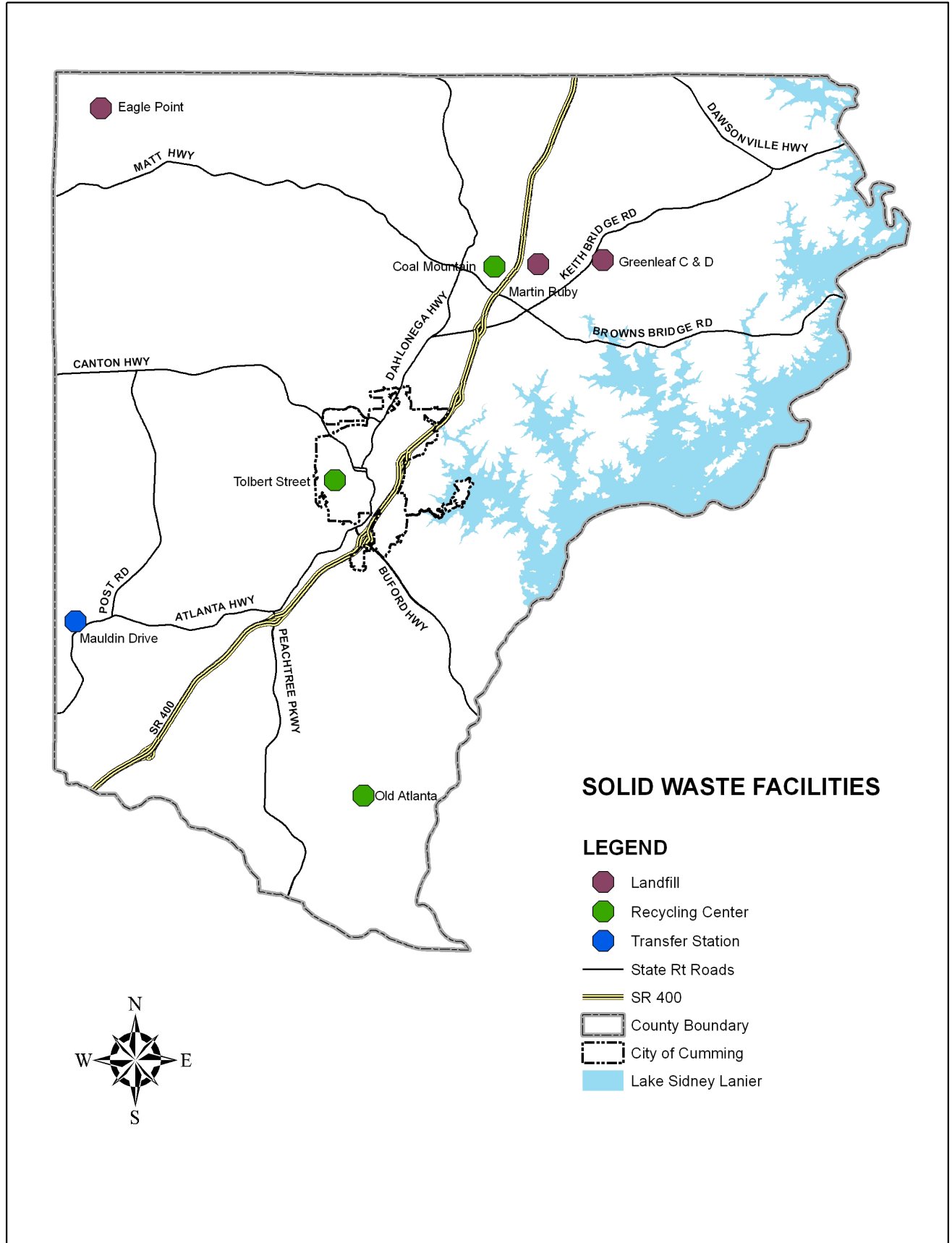
The county has three manned recycling centers where residents can bring their recyclable material and residential household waste. The Tolbert Street Recycling Center is located at 351 Tolbert Street in downtown Cumming. The Old Atlanta Road Recycling Center is located at 3678 Old Atlanta Road in the south end of the county and the Coal Mountain Recycling Center is located at 3560 Settingdown Road. Forsyth County hauls the solid waste from the centers to EPLF and the recyclable items are transported to private material recovery and processing facilities.

In the first quarter 2010, Forsyth County recycling centers collectively received an average of the following per month: 181 tons of household waste; 2,360 pounds (lb) of aluminum; 88,460 lb of mixed paper including newspapers, magazines and office paper; 36,647 lb of plastic; 46,500 lb of glass; 8,320 lb of phonebooks; 86,100 lb of cardboard; 3,780 lb of tin and steel cans; 431 gallons of oil; 801 lb of batteries; 17,547 lb of scrap metal; 5,104 lb of electronics; and 32 tires. Used books, shoes, clothing and cooking oil are also collected for recycling, but weights are not obtainable.

### **Inventory of Waste Collection**

At present, there are thirteen private collection companies. These companies collect household waste and industrial waste throughout the county. The City of Cumming has one waste hauler and does not

**FIGURE 4: SOLID WASTE FACILITIES OF FORSYTH COUNTY**



offer recycling. These collection companies are required to obtain a county business license and a permit to transport waste to a landfill. The locations of the landfills and recycling centers within the county are shown in Figure 4.

### **Inventory of Waste Reduction**

At present, Forsyth County's waste reduction efforts at three county recycling centers include the recycling of newspapers, office paper, phonebooks, magazines, cardboard, paperboard, aluminum cans, steel and tin cans, #1 and #2 plastic, plastic bags, glass, motor vehicle oil, used cooking oil, alkaline and rechargeable batteries under two pounds, printer cartridges, scrap metal, used cooking oil, books, clothing and shoes. Additionally, recycling is offered in all Forsyth County Schools, four county buildings and three county parks. To successfully reduce our solid waste, the residents of the county have the opportunity to be educated on the importance of natural resources, conservation and the benefits of recycling. The education programs can be provided to businesses, schools, civic organizations and county citizens. Information and guidelines regarding source reduction and recycling is available from Keep Forsyth County Beautiful.

Data for municipal solid waste and recycling collected in Forsyth County are received from EPLF and the Forsyth County recycling centers. This data can be helpful for assessing the waste reduction needs of the county. Currently, waste haulers who work in the county are not required to report the amount of waste or recycled materials they collect from county residents.

The county has a Solid Waste Management Plan that was prepared in accordance with the Georgia Comprehensive Solid Waste Management Act outlined in the state's minimum standards and procedures. The current plan was adopted in 2004 and updated in 2010.

## **General Government**

### **Inventory**

Forsyth County Administration Building, located at 110 East Main Street:

- Administration
- Board of Commissioners
- Commercial Services Department
- Communications Department
- Engineering Department
- Finance Department
- Geographic Information Services Department
- Information Technology Department
- Personnel Services Department
- Planning and Development Department
- Public Facilities Department
- Risk Management Department
- Tax Assessors Office
- Water and Sewer Department
- Voter Registrations and Elections Department

*Forsyth County Courthouse*, located at 100 Courthouse Square:

- Clerk of Court
  - District Attorney
-

- Sheriff Court Services
- State Court
- State Court Solicitor
- Superior Court

*Forsyth County Courthouse Annex*, located at 112 West Maple Street:

- Juvenile Court
- Probate Court
- Victim Witness Assistance

*Forsyth County Public Safety Building*, located at 3520 Settingdown Road:

- Fire Department
- Emergency Management Agency
- 911 Center
- Risk Management Department

The following departments are housed at 118 Castleberry Road:

- Forsyth County Pre-Trial Services
- Forsyth County Purchasing Department

The following departments are housed at 875 Lanier 400 Parkway:

- Juvenile Justice Center
- Court Appointed Special Advocate (CASA) Offices
- Code Enforcement Department
- Forsyth County Extension Service
- Natural Resources Conservation Service
- Keep Forsyth County Beautiful

The following departments are housed at 1090 Tribble Gap Road:

- Magistrate Court
- Tax Commissioners Main Office

*Forsyth County Building Shop* is located at 351 Tolbert Street.

*Forsyth County Coroner's Office* is located at 202 Old Buford Highway.

*Forsyth County Department of Family and Children* is located at 426 Canton Highway.

*Forsyth County Fleet Services* is located at 4140 County Way.

*Forsyth County Indigent Defense Office* is located at 101 Old Buford Road.

*Forsyth County Mental Health* is located at 125 North Corner Parkway.

*Forsyth County Parking Deck* has 246 parking spaces and is located in downtown Cumming.

*Forsyth County Parks and Recreation Department* is located at 6300 Keith Bridge Road.

---

*Forsyth County Public Health* is located at 428 Canton Highway.

*Forsyth County Public Relations Officers* is located at 475 Tribble Gap Road.

*Forsyth County Coal Mountain Recycling Center* is located at 3560 Settingdown Road.

*Forsyth County Old Atlanta Recycling Center* is located at 3678 Old Atlanta Road.

*Forsyth County Tolbert Street Recycling Center* is located at 351 Tolbert Street.

*Forsyth County Sawnee Mountain Preserve Visitor Center* is located at 4075 Spot Road.

*Forsyth County Senior Citizens Center* is located at 595 Dahlonega Street.

*Forsyth County Sheriff's Office* has facilities at the following locations:

- Sheriff's Office Special Operations Division – 101 East Main Street.
- Sheriff's Office Criminal Investigations Division – 475 Tribble Gap Road.
- Sheriff's Office Jail Detention Center – 202 Veterans Memorial Boulevard.

*Forsyth County Tax Commissioner Sharon Springs Office* is located at 1950 Sharon Road.

### **Assessment**

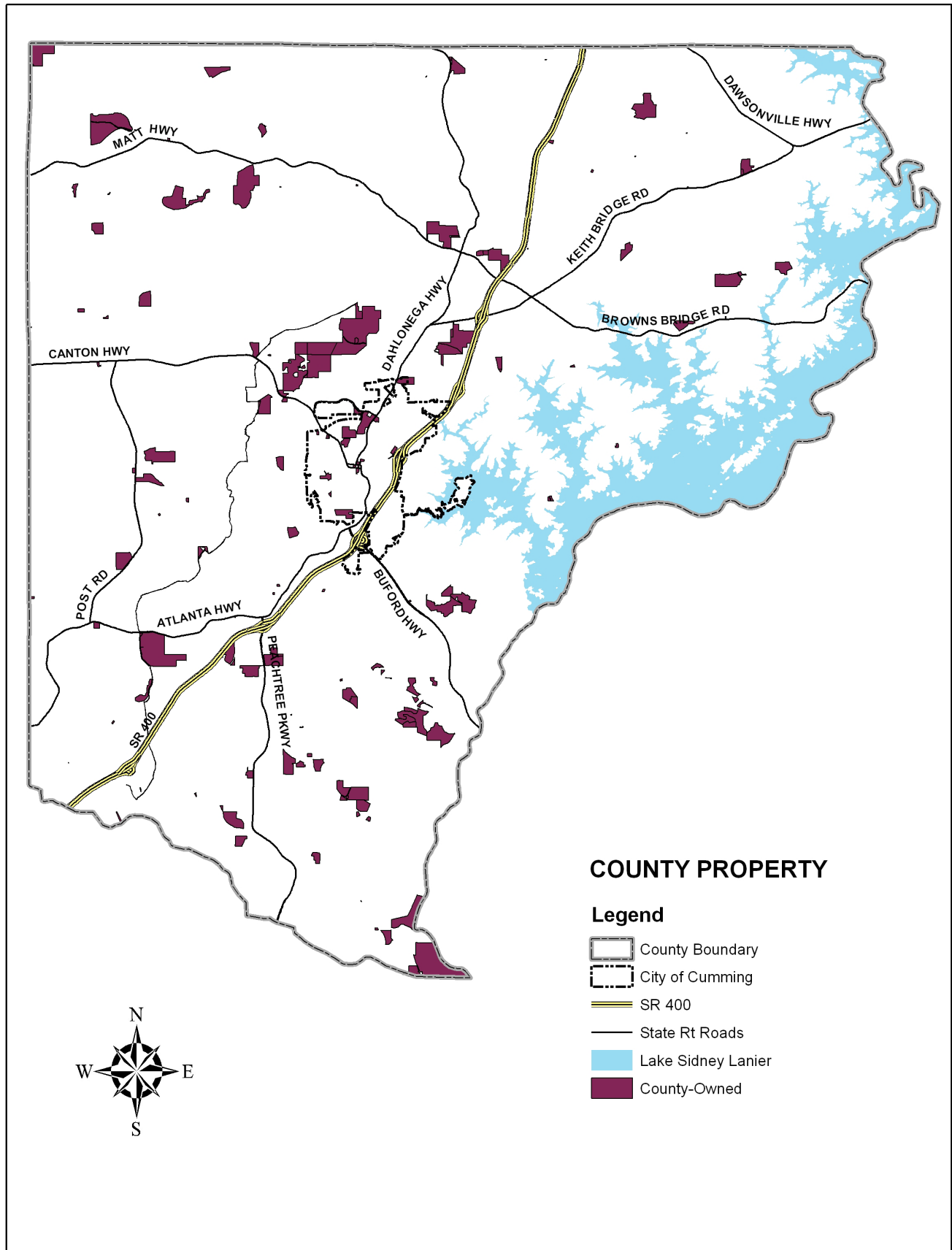
As the county's population continues to grow, there will be a demand for additional government services. This will lead to an increase in government employees and building space. The county is currently conducting an audit to project facility needs to 2018. See Figure 5 for a map of all county-owned properties as of summer 2010.

### **Sheriff's Office**

The primary law enforcement agency serving Forsyth County is the Sheriff's Office. The Sheriff is a constitutional officer elected to serve four-year terms. The majority of the Sheriff's Office funding comes through the county's general fund, although the office does receive some revenue through fees and fines. The Sheriff's Office operates under two bureaus, Enforcement and Headquarters. The Enforcement Bureau consists of the Uniform Patrol, Special Operations and Criminal Investigations Divisions. The Headquarters Bureau consists of the Detention, Support Services and Court Services Divisions.

The Sheriff's Office has 387 authorized positions, which are made up of civilian and uniformed personnel. Currently, the office operates out of nine separate facilities. In 2003, a study was undertaken to review operations and determine future capital needs. To date, the only portion of the 2003 study recommendations that has been implemented is the building of two separate precincts to maintain better response times and to provide improved county-wide services. One of the two constructed precincts serves the northern portion of the county and is located off of Keith Bridge Road with the other precinct serving the southern section of the county, situated near Peachtree Parkway. These precincts were opened in 2008 and house the Uniform Patrol Division and the property crimes investigators for the Criminal Investigations Division. In addition, a building to house the Sheriff's Office Supply Unit and Evidence Unit was opened in 2008. A new facility

FIGURE 5: FORSYTH COUNTY-OWNED PROPERTY



was completed in 2010 for use by the agency's crime scene technicians.

The primary headquarters for the Sheriff's Office and the main headquarters for the Criminal Investigations Division are located in a rented office building located at 475 Tribble Gap Road. The Special Operations Division is located in a rented office building at 101 East Main Street. See Figure 6 for a map of public safety locations. A bond referendum was placed before the voters in 2008 to build a new headquarters that would house the majority of the administrative functions of the agency as was recommended by the 2003 study. However, that bond vote failed to pass. The Support Services Division, which includes the Records and Civil Units, is currently placed in a renovated motel that was purchased by the county approximately 10 years ago on Bald Ridge Marina Road at SR 400. This facility now houses a number of county offices in addition to the Sheriff's Office, including Juvenile Court and Code Enforcement.

The Forsyth County Detention Center remains over capacity since the study was completed in 2003. A bond referendum to construct a new detention center has been placed before the voters on three different occasions, but all three have been rejected. The original detention center was built in the 1970s with one addition made in 1991 to expand the bed capacity. The maximum capacity of the detention center is 227 inmates. On any given day, there will be between 210 and 220 inmates incarcerated at the center. In addition, approximately 120 inmates have to be housed at other detention facilities outside of Forsyth County, which cost Forsyth County taxpayers roughly \$1.3 million in 2010.

## Fire Department

### **Fire Protection and Emergency Management System**

Fire protection for the county is provided by the Forsyth County Fire Department. The department's total staffing is 153 with 126 of those being career firefighters in the field and the remaining being administrative, training, fire marshal and support staff. Additionally, six part-time 'shift worker' positions are utilized daily to supplement staffing.

The Forsyth County Fire Department operates thirteen fire stations throughout the county. Twelve of these stations are staffed by career firefighters and one station is staffed with an EMS crew only. The county also provides fire protection for the City of Cumming. Building inspection, plan review and fire investigations are handled by the Fire Marshal's Office while all department training is conducted by the Training Division. Each division consists of a division chief and various subordinate staff. Training facilities are located at the public safety complex and include a classroom, auditorium, library, two-story live fire training facility, five-story training tower, a vehicle fire simulator, confined space facilities and a roof and ventilation simulator.

The Forsyth County Fire Public Safety Education Division is responsible for all fire education programs. The division's main emphasis is on school age children. Along with the basic fire safety programs, the county has a fire safety house that teaches children what to do in case of a home fire. The division also provides free smoke detectors and installation to senior citizens and lower income families. The staff assists any member of the community by checking their smoke detectors and addressing any fire related concerns.

Other programs include:

- Church fire prevention and arson awareness
- Pre-school fire safety
- Juvenile fire setters program
- Fire station tours
- Fire safety for senior citizens
- Courtesy home fire inspections
- Fire extinguisher training

The Forsyth County Fire Motor Maintenance Division, located at the public safety complex, is solely responsible for the maintenance of all department vehicles, apparatus and small engines. It consists of three EVT (emergency vehicle technician) qualified personnel and operates out of a four-bay facility with full automotive and heavy-duty truck repair capabilities. The division performs all preventative maintenance and overhauling of fire department equipment and has the ability to perform in-house metal fabrication.

Emergency medical transport is provided by a contract-based third party provider. Advanced Ambulance Service, Inc. supplies six 24-hour ambulances under the title of Forsyth County EMS and staffs the units out of fire stations 1, 2, 9, 10, 12 and 13. The fire station and EMS locations are shown in Figure 6 with descriptions and coverage's listed below.

*Forsyth County Fire Headquarters and Administration*

3520 Settingdown Road

This facility houses the Office of the Fire Chief, Office of the Deputy Fire Chief, Fire Marshal's Office, training facilities, motor maintenance facilities and administrative personnel.

*Station 1*

234 Castleberry Industrial Drive

This station has 24-hour coverage with a minimum of 4 firefighters per 24-hour shift. This location houses the Office of the First Battalion as well as the following apparatus: Engine 1, Truck 1 and Med 1.

*Station 2*

4055 Carolene Way

This station has 24-hour coverage with a minimum of 3 firefighters per 24-hour shift. This location houses the Forsyth County Fire Department Hazardous Materials Unit and the following apparatus: Engine 2, Haz-Mat 2 and Med 2.

*Station 3*

4125 Dr. Bramblett Road

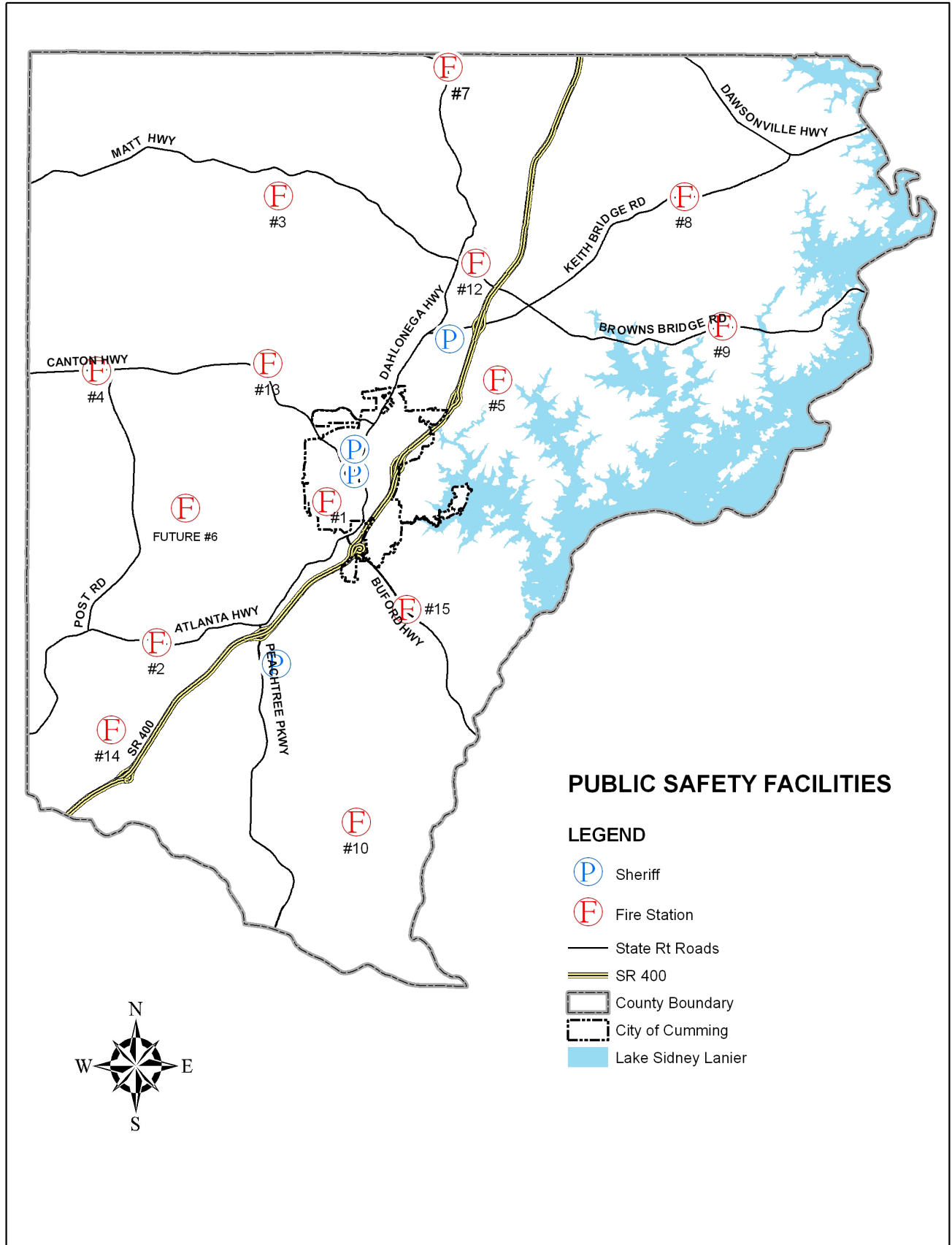
This station has 24-hour coverage with a minimum of 2 firefighters per 24-hour shift. This location houses the following apparatus: Engine 3 and Brush Truck 3.

*Station 4*

3805 Canton Highway

This station has 24-hour coverage with a minimum of 2 firefighters per 24-hour shift. This location is home to an ALS (Advanced Life Support) engine company and houses the following apparatus: Engine 4 and Light/Air 4.

FIGURE 6: PUBLIC SAFETY FACILITIES OF FORSYTH COUNTY



*Station 5*

2720 Holtzclaw Road

This station has 24-hour coverage with a minimum of 2 firefighters per 24-hour shift. This location houses the Forsyth County Fire Department Wildland Unit and the following apparatus: Engine 5, Tanker 5 and Brush Truck 5.

*Station 7*

6320 Dahlenega Highway

This station has 24-hour coverage with a minimum of 2 firefighters per 24-hour shift. This location houses the following apparatus: Engine 7 and Tanker 7.

*Station 8*

6015 Keith Bridge Road

This station has 24-hour coverage with a minimum of 2 firefighters per 24-hour shift. This location is home to an ALS (Advanced Life Support) engine company and houses the following apparatus: Engine 8 and Brush Truck 8.

*Station 9*

7385 Browns Bridge Road

This station has 24-hour coverage with a minimum of 2 firefighters per 24-hour shift. This location houses the following apparatus: Engine 9, Tanker 9 and Med 9.

*Station 10*

3680 Old Atlanta Road

This station has 24-hour coverage with a minimum of 2 firefighters per 24-hour shift. This location is home to an ALS (Advanced Life Support) engine company and houses the following apparatus: Engine 10 and Med 10.

*Station 12*

3530 Settingdown Road

This station has 24-hour coverage with a minimum of 3 firefighters per 24-hour shift. This location houses the Forsyth County Technical Rescue Unit and the following apparatus: Engine 12, Rescue 12 and Med 12.

*Station 13*

1525 Dr. Bramblett Road

The location is staffed with only one EMS crew and houses Med 13. It is also used as a storage facility for reserve apparatus.

*Station 14*

800 McFarland Parkway

This station has 24-hour coverage with a minimum of 2 firefighters per 24-hour shift. This location houses the following apparatus: Engine 14 and Truck 14.

*Station 15*

1525 Buford Highway

This station has 24-hour coverage with a minimum of 2 firefighters per 24-hour shift. This location houses the Forsyth County Fire Department Water Rescue Unit and the following apparatus: Engine 15 and Rescue 15.

**Assessment**

The Fire Department is independently funded through a 1.841 mill fire tax assigned exclusively to fire safety services. The Fire Department provides fire protection services as a means to protect the health, safety and welfare of its citizens. Currently, there are thirteen fire stations with twelve of them being staffed 24 hours-a-day by full-time, career firefighters. Typical of other local fire departments, the Forsyth County Fire Department uses the criterion of five road miles from each station to define the territory for service and protection. This criterion is customary with the Insurance Services Office (ISO), which rates fire departments for insurance purposes that ultimately determines individual citizen premiums. The citizens of Forsyth County benefit from an average response time of five minutes and 13 seconds for the first arriving fire apparatus according to 2009 data. In 2009, following an exhaustive 2008 ISO analysis of the fire, water and E-911 capabilities of the county, a reduction in score was levied improving the ISO rating from a '6/9' to a county-wide '5'. In establishing the county's level of service, it was determined that the existing service of one fully equipped station plus a ladder truck for every 16,734 persons would be necessary to continue to meet the future needs of the county. The Fire Department's mission statement is: To protect life, property, and the environment from the ravages of fire and all other emergencies, both natural and man-made, and provide citizens and visitors with emergency medical pre-hospital care in a highly effective manner with the best trained personnel possible.

**Recreation Facilities**

The Parks and Recreation Department oversees all recreational facilities in the county and is composed of five divisions: Administrative, Parks and Facilities, Athletic, Recreation Programs and Outdoor Recreation. The department completed a system-wide recreation master plan update for the years 2007 through 2011, which includes guidelines for upgrading existing resources and developing new facilities and programs. The master plan addresses both the active and passive recreational needs of the county through the inclusion of recommendations for land acquisition; improvements to existing recreation sites; development of new parks, facilities and greenways and includes an implementation program with a five-year capital improvements schedule.

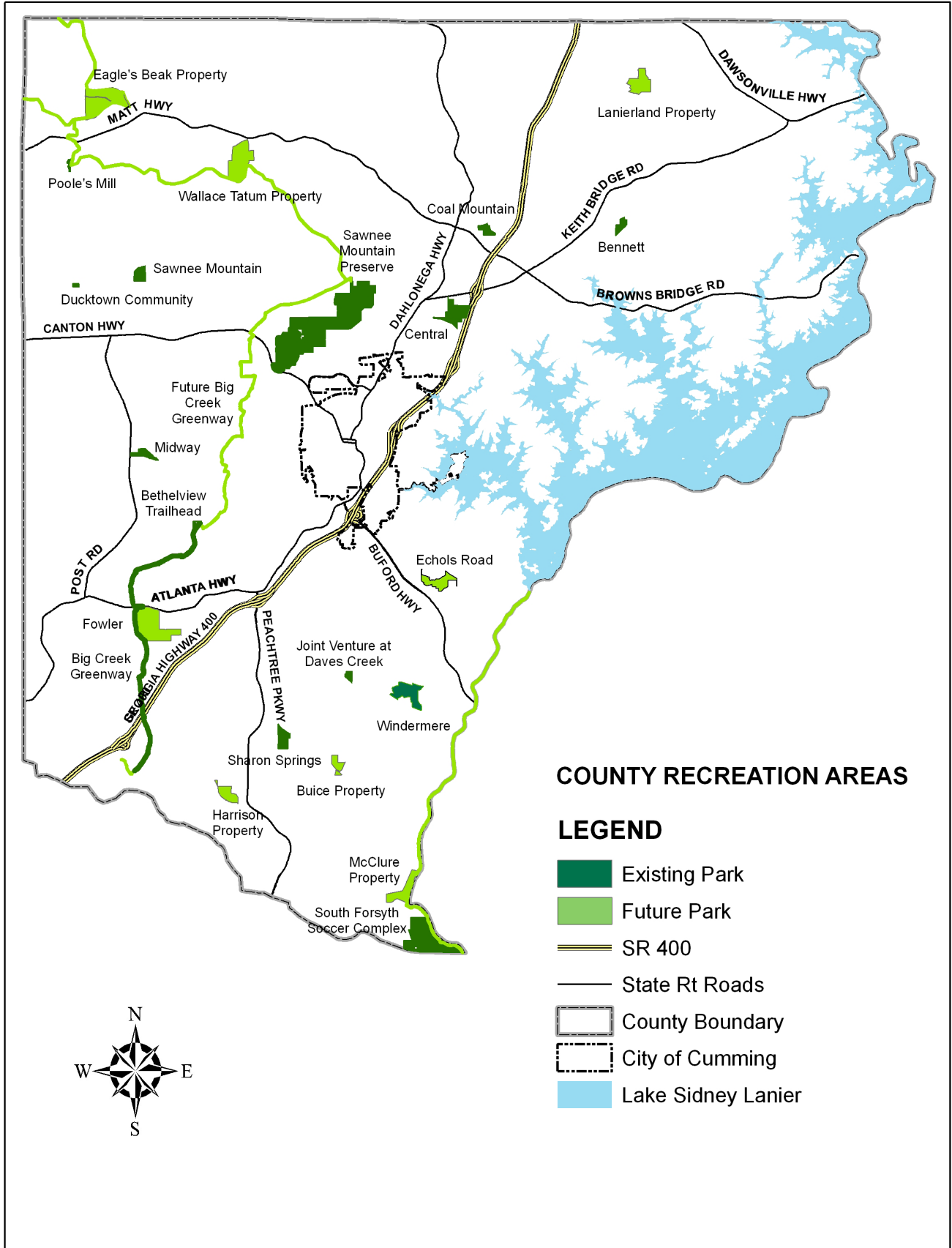
**County Recreation Areas**

Within Forsyth County, there are fourteen developed recreation sites and six undeveloped properties owned by Forsyth County and managed by the Parks and Recreation Department. Additionally, there are three federally owned parks along Lake Sidney Lanier that are operated by the county and the site of Lanierland, a former music venue, was purchased by the county and will be programmed in the future as another county recreation area. The following paragraphs give a description of each park and their locations are illustrated in Figure 7.

*Bennett Park*

Bennett Park, located on Burruss Mill Road, is the county's oldest recreation site that was constructed in 1978. The site encompasses 30 acres and is devoted to active use as a community park. Facilities within the park include baseball and softball fields, a multi-purpose field, basketball courts, tennis courts, multi-purpose courts, a playground and picnic areas as well as support facilities. The park receives heavy utilization and erosion problems associated with steep slopes need to be addressed.

**FIGURE 7: COUNTY RECREATION AREAS OF FORSYTH COUNTY**



*Central Park*

Central Park, built in 2001 with SPLOST funding, is an 85-acre community park located on SR 306 proximate to SR 400. The initial development phase included baseball and softball fields, soccer fields, tennis courts, disc golf, a playground, walking trail and support facilities. The Parks and Recreation Department offices were relocated from Sharon Springs Park to a new administration building at Central Park as part of the phase one development.

The Central Park Recreation Center was opened in 2003. This facility contains gymnasiums, indoor walking and jogging track, fitness room, rooms for dance, aerobics, arts and crafts and meeting space.

*Chestatee Community Building*

The Chestatee Community Building is located on a 3.6-acre site on Keith Bridge Road and is used approximately 12 to 14 times per year. The building contains one meeting room, a kitchen and restrooms.

*Coal Mountain Park*

This is a 26-acre site that is located adjacent to Settingdown Road close to SR 400. Facilities include baseball and softball fields, a soccer field, half-court basketball, playgrounds, a walking and jogging trail, a picnic area and support facilities. The park receives relatively high utilization during baseball and softball seasons.

*Ducktown Community Park*

Ducktown Park opened in 2007 and is located on Heardsville Road in northwest Forsyth County. It is a small neighborhood park comprised of 5 acres devoted to active use. The site is tiered and includes free play ballfields and an old community building.

*Fowler Park*

This is an 85-acre park that will be completed in 2011. It is located off of SR 9, across from the intersection with Castleberry Road. It will contain fields for football, soccer, lacrosse, baseball and softball, tennis courts, basketball courts, walking trails, a track, pavilions, a large playground, 10-acre passive area, skate park and trailhead for the Big Creek Greenway. A recreation center is also planned as a future facility.

*Joint Venture Park at Dave's Creek*

Dave's Creek Park is located on Melody Mizer Lane in the south portion of the county. This park was developed jointly with the Forsyth County Board of Education. Covering 16 acres, the park includes a multi-use field, three ballfields, pavilions and batting cages.

*Midway Park*

Located on Post Road in the western section of the county, Midway Park is a 40-acre site constructed in 1985. Except for two acres, this park is devoted to active use. Midway Park contains baseball and softball fields, a football field, batting cages, a multi-purpose field, basketball and tennis courts, a large covered pavilion, community building, a playground and picnic area, a small nature trail and support facilities. There are 20 acres of additional undeveloped land adjoining the park.

*Poole's Mill Park*

Poole's Mill Park is a passive-use, historic neighborhood park located on Poole's Mill Road close to SR 369 in the northwest portion of the county. Constructed in 1995, Poole's Mill Park occupies a land area of 9.6 acres. The park is devoted entirely to passive recreation and utilization is low to moderate.

The park is situated on a creek and includes a restored covered bridge, a nature trail, creek access, a garden area with benches and a monument, playground, a covered pavilion with picnic tables and cooking grills, a horseshoe pit and restrooms. A portion of the site remains undeveloped.

*Sawnee Mountain Park*

Located in western Forsyth County on Watson Road close to SR 20, Sawnee Mountain Park was opened in 1998. The park contains 44 acres, virtually all of which is devoted to active use. Utilization of athletic facilities is moderate to heavy, but is currently programmed to accommodate the lowest number of teams within the recreation system.

Included at Sawnee Mountain Park are baseball and softball fields, football and soccer fields, basketball and tennis courts, a small community building, pavilion and playground, a walking and jogging trail and support facilities.

*Sawnee Mountain Preserve*

The Sawnee Mountain Preserve is a 963-acre passive-use park established in the central portion of the county. Forsyth County used Georgia Greenspace funds to acquire just over 100 acres of this site, which is permanently protected greenspace per state requirements. A master plan was prepared for the Preserve in the spring of 2003. Currently, the Preserve has 3.5 miles of hiking trails, a learning library and sustainably constructed visitor center, 120-seat outdoor amphitheater, picnic pavilions, playground, tree house, canopy walk learning platform and a native plant garden. The master plan indicates the addition of another 4 miles of hiking trails, additional restroom facilities, a wilderness training area and the potential renovation of an existing building for recreational programming for the final phase of park development.

*Sharon Springs Park*

Sharon Springs Park, located on Sharon Road in the south portion of the county was constructed in 1994 and is used for active recreation. Utilization of this park is heavy for youth baseball and softball, adult softball, football and soccer programs. Facilities include baseball and softball fields, soccer and football fields, batting cages, basketball courts, tennis courts, pavilions, a playground, a walking and jogging trail, community building, administrative office and support facilities.

*South Forsyth Soccer Complex*

The South Forsyth Soccer Complex was constructed in 2002 and opened in late summer of 2003. This 31-acre park is located on McGinnis Ferry Road close to the Chattahoochee River and contains game and practice soccer fields and support facilities. A trail is planned that will eventually link to the Chattahoochee River.

*Windermere Park*

This passive-use park is located within the planned community of Windermere. The park occupies approximately 87.8 acres. Facilities include a nature trail, walking and jogging trail, practice soccer fields and support facilities.

**Lake Parks**

Forsyth County operates three passive-use lake parks owned by the U.S. Army Corps of Engineers: Charleston Park, Shady Grove Campground and Young Deer Creek Park. These are located in the eastern portion of the county, between Browns Bridge Road and Pilgrim Mill Road, along the shoreline of Lake Sidney Lanier.

*Charleston Park*

Charleston Park is the northernmost of the three lake parks and also the largest with 154 acres. A significant portion of the park is unused as it is presently inaccessible for vehicular traffic. The developed portion receives heavy utilization and includes boat ramps, a swimming beach, picnic facilities, a trail and restroom building. There are future plans for 6.5 miles of mountain bicycle trails and an additional parking lot once funding is available.

*Shady Grove Park*

Located southeast of Charleston Park, Shady Grove Park is primarily a camping facility and occupies a land area of 107 acres. The site is rolling and well forested. Facilities include RV campsites, group campgrounds, restrooms with shower facilities, swimming beaches, a boat ramp, horseshoe pits and playground equipment.

*Young Deer Creek Park*

The smallest of the three lake parks is Young Deer Creek with a size of just over 13 acres. It receives seasonally heavy usage and facilities include boat ramps, a swimming beach, pavilion, play equipment, picnic facilities and a restroom building.

**Undeveloped Parks**

There are eight properties of undeveloped parkland that are owned by the county and dedicated for future park use.

The Buice property is 39 acres located on Old Atlanta Road near Lambert High School. There will be a future recreation center constructed on this site.

The Eagle's Beak property was purchased with greenspace bond funds and is located on Old Federal Road along the Etowah River. It is approximately 225 acres and will be a passive-use park with a canoe launch, parking area, restroom facilities, natural surface trails and primitive camping. One million dollars from the bond money will go towards the design and construction of this future facility. The National Park Service assisted with the concept plan in 2009 through the Rivers Trails and Conservation Assistance Program (RTCA).

The Echols Road property is 85 acres adjacent to Haw Creek Elementary School and Lakeside Middle School, which is intended to be a passive use facility.

The Harrison property is 63 acres and is located along the north and east sides of Caney Road,

just west of the intersection with Brookwood Road.

The Lanierland property is 109 acres and is north of Jot-Em-Down Road. This park will be an active recreation park for the northeastern section of the county.

The McClure property is 100 acres located off of Old Atlanta Road that borders the Chattahoochee River. This park is planned to have a walking trail, pavilions, parking and restroom facilities.

The Threatt property occupies 180 acres at the intersection of McGinnis Ferry Road and Kemp Road. This parcel is located adjacent to the South Forsyth Soccer Complex and will be developed to afford residents a wide range of both active and passive recreational opportunities.

The Wallace Tatum property is 185 acres and is located on the south side of Wallace Tatum Road, just south of the intersection with SR 369 and will include a combination of active and passive recreational facilities as well as a library and senior service facility.

The Windermere property is 31 acres and will adjoin the existent passive-use park.

In addition to these sites, there are two other parcels of land adjacent to schools that could be donated to the county for development as parks. The first is a 30-acre site adjacent to Liberty Middle School and the second 10-acre site is proximate to Chestatee Elementary School.

#### **School Recreation Areas**

Joint-use agreements are negotiated with individual school principals for community use of school recreation areas. At present, the Parks and Recreation Department utilizes facilities at eight school sites throughout the county.

- Chestatee Elementary School – Gymnasium for “Girls on the Run”
  - Sawnee Mountain Elementary School – Gymnasium and classrooms for Safety Town
  - Matt Elementary School – Gymnasium for gymnastics program
  - Midway Elementary School -- Gymnasium used for gymnastics program and “Girls on the Run”
  - Settles Bridge Elementary School – Gymnasium for gymnastics program, baton and “Girls on the Run”
  - Silver City Elementary School – Gymnasium for “Girls on the Run”
  - Sharon Elementary School – Gymnasium and classrooms for gymnastics and Safety Town
  - Vickery Elementary School – Gymnasium for gymnastics program
-

- North Forsyth High School – Field used for youth football and cheerleading competitions
- Forsyth Central High School – Football field, track and stadium for Special Olympics Spring Games and County-Wide Track Meet
- South Forsyth High School – Football field, track and stadium for County-Wide Field Day

Under present joint-use agreements, the Parks and Recreation Department programs and scheduled games can be “bumped” should a school-related activity be scheduled at a concurrent time period.

### **State and Federal Recreation Areas**

Within Forsyth County, the U.S. Army Corps of Engineers (Corps) maintains over 600 acres of recreation sites. Approximately half of this acreage is devoted to campsites and day use facilities.

The camping areas include walk-in campsites, showers, boat ramps, playgrounds, group camping areas, picnic tables, swimming areas, restrooms and support facilities. All facilities are accessible to the handicapped. Day use areas consist of boat ramps, playgrounds, picnic tables, restrooms and support facilities. Some of the day use areas include beaches and permit swimming, but overnight camping is not permitted.

Forsyth County is considering leasing up to nine Corps lake parks. All of these sites are located south of SR 369 and when combined occupy an area of 322 acres. See Figure 8 for a map denoting state and federal recreation areas. A summary of each Corps site is presented below:

#### *Athens Park*

The Athens site occupies an area of 53.5 acres and does not presently contain any facilities; it is still under development.

#### *Bethel Park*

Bethel is an 85.4-acre site that is relatively flat and contains several attractive coves. Twenty-five acres are presently developed. Facilities include three boat ramps, a dock and restroom building.

#### *Bald Ridge Creek Campground*

Bald Ridge occupies a land area of 55.6 acres. The predominant use is for RV camping and there are a total of 82 campsites; this campground receives heavy utilization. Additional facilities include picnic areas and grills, a beach, an open play area and three restroom buildings.

#### *Keith's Bridge Park*

The Keith's Bridge site consists of 25.4 acres with three boat ramps, a beach, two docks, picnic areas and grills, trails and a restroom building.

#### *Long Hollow Park*

Long Hollow is a 28.8-acre site that includes picnic areas along the waterfront, a playground, trails, two boat ramps, a dock and restroom building.

*Six Mile Park*

Occupying an area of 13.8 acres, of which only two acres are developed, Six Mile contains two boat ramps.

*Tidwell Park*

Tidwell is a 7.4-acre site that is elevated above the lake, offering superb views of the surrounding locale. The site receives moderate utilization and contains a boat ramp, picnic areas and restroom building.

*Two Mile Park*

Occupying 35.6 acres, utilization is presently low and all roads are unpaved. Facilities include a boat ramp, picnic areas and restroom building.

*Vann's Tavern Park*

Vann's Tavern is a relatively level site of 16.5 acres. Utilization is heavy and facilities include a pavilion, three boat ramps, a trail and restroom building.

Along with Corps recreational property, there is a portion of the Chattahoochee River National Recreation Area (CRNRA) within Forsyth County, comprising 215.76 acres that include sections of the Bowman's Island and Settles Bridge units. CRNRA provides opportunities to hike, picnic, raft, canoe, kayak, horseback ride and fish. As part of the transportation improvements related to the McGinnis Ferry Road bridge, the county is donating land for a parking lot, boat ramp and picnic area that will be maintained by the U.S. National Park Service as part of the CRNRA. This facility is scheduled to be completed by the end of 2010. Adjacent to the CRNRA along the Chattahoochee River is the Buford Trout Hatchery, the county's only state heritage preserve, which serves as a public fishing area and fish production facility. The hatchery also has walking trails that allow for bird and other wildlife viewing. See Figure 7 for the locations of the federal and state recreation areas.

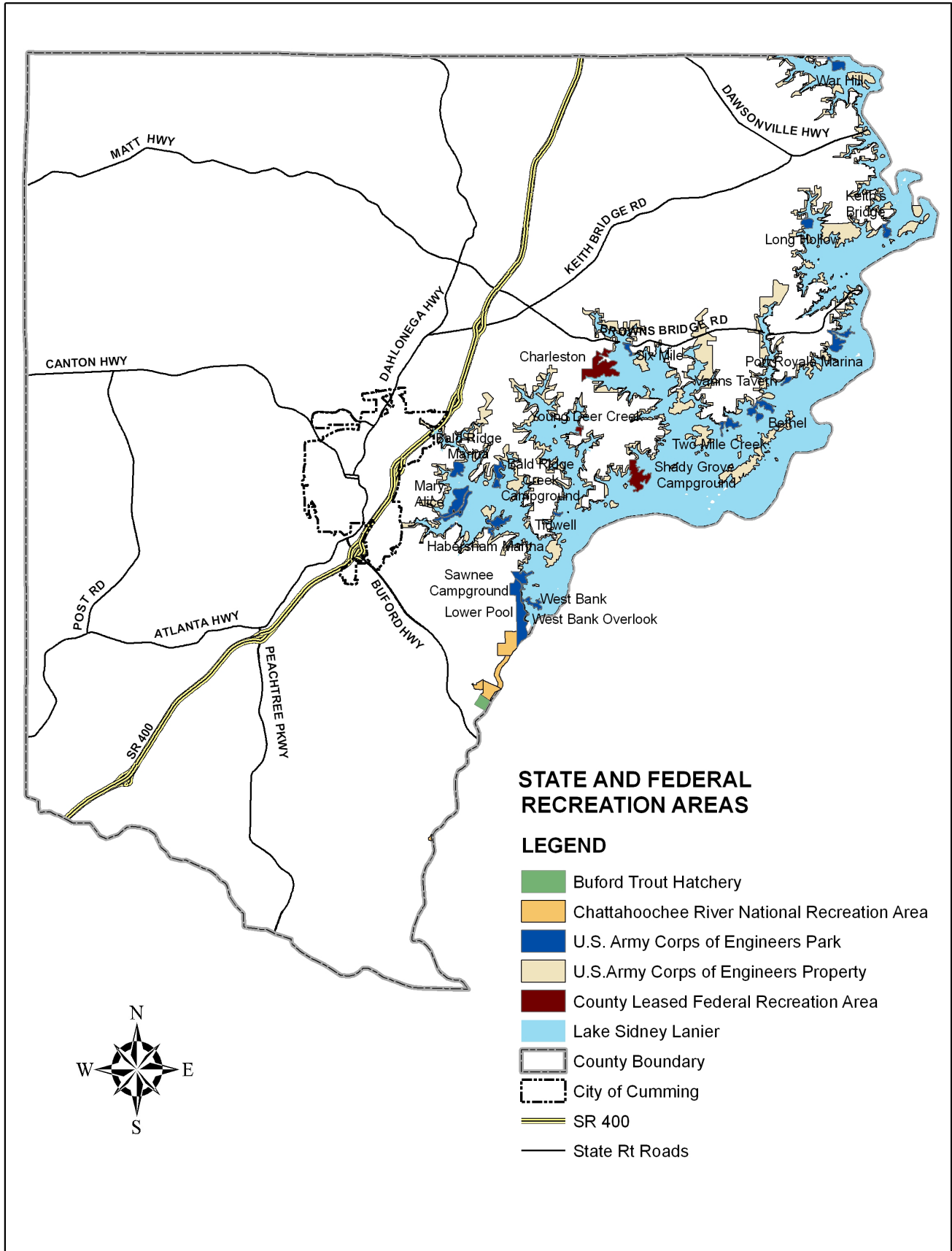
## Recreation Programs

The Forsyth County Parks and Recreation Department provides a broad range of athletic and non-athletic programs for youth and adults. Youth athletic programs are offered throughout the year at county parks and school athletic facilities. All programs are coordinated through the Parks and Recreation Department and utilize volunteers to serve as coaches and team assistants. The county's adult sports program includes organized activities and leagues for men's, women's and coed teams. These programs utilize both indoor and outdoor facilities. In addition, athletic camps are offered through most of the year and the department also has tournament events ranging from the district level to state to World Series level. Non-athletic programming consists of offerings such as art instruction and dance, kid's night out, CPR training, etiquette classes and the Girls on the Run program. The Outdoor Recreation Division focuses on adventure recreation and environmental education instruction through courses, camps and trips ranging from mountain biking, rock climbing, kayaking, canoeing and nature programs.

### Senior Citizens

The Park and Recreation Department's goal is to work in conjunction with the county's Senior Center to provide a variety of programs for the senior population. The program has both active

FIGURE 8: STATE AND FEDERAL RECREATION AREAS OF FORSYTH COUNTY



and passive opportunities including fitness programs, social dance and tennis leagues as well as bingo, board and card games, arts and crafts instruction, book swaps, movie days and covered dish luncheons. The county offers seniors the opportunity to take bus trips for sightseeing and shopping purposes.

**Special Interest Programs**

The Parks and Recreation Department has a variety of cultural and special interest programs on a seasonal basis. Some of the popular special events include the Special Olympics, County-Wide Field Day, the County-Wide Track Meet, Seasoned Adult Fitness Event (S.A.F.E.), Senior Expo, Father and Daughter Dance, Art Expo, Easter Egg Hunt, the “Bark-In-The-Park” dog show event, Play In The Park Festival, Santa’s Calling and Christmas in Central Park.

**Assessment of Recreational Facilities**

*Level of Service*

Table 4 outlines facilities planning standards within the recreation master plan from which a needs assessment was produced. Facilities not presently available, but identified through the master plan public participation process include an aquatic center that the City of Cumming is now in the process of constructing, a multi-purpose building, visual arts center, outdoor adventure park and programs and facilities for special needs groups in addition to more fields, tracks, courts, trails, pavilions, playgrounds, dog parks, disc golf courses and buildings.

TABLE 4: FORSYTH COUNTY FACILITIES PLANNING STANDARDS

<b>Facility Type</b>	<b>Forsyth County Standard</b>
Ballfields	1 Per 2,600
Football Fields	1 Per 20,000
Soccer Fields	1 Per 7,000
Lacrosse Fields	1 Per 40,000
Open Play Fields	1 Per 20,000
Tennis Courts	1 Per 4,700
Running Tracks	1 Per 50,000
Dog Parks	1 Per 60,000
Multi-Purpose Trail System	1 Per county
Park Trails	1 Per Community Park
Nature Trails	1 Per Passive Park
Swimming Pool Complex	1 Per 100,000
Multi-Purpose Courts	1 Per 15,000
Outdoor Volleyball Courts	1 Per 20,000
Skate Parks	1 Per 100,000
Disc Golf Courses	1 Per 75,000
Recreation Centers/Multi-purpose Buildings	1 Per 50,000
Community Buildings	1 Per 30,000
Playgrounds	1 Per 10,000
Pavilions	1 Per 10,000

TABLE 4: FORSYTH COUNTY FACILITIES PLANNING STANDARDS continued

<b>Facility Type</b>	<b>Forsyth County Standard</b>
Concessions/Restrooms	1 Per 4 Athletic Fields
Maintenance Facilities	1 Per Community Park

The existing level of service is 13.93 acres of parkland, active and passive facilities, per 1,000 population, based on the 2009 population estimate of 174,520 per the U.S. Bureau of the Census.

### Public Health Facilities

Forsyth County residents have a number of health facilities available to them. Northside Hospital-Forsyth, formerly Baptist Medical Center, resides within the City of Cumming limits at 1200 Baptist Medical Center Drive. Northside Hospital - Forsyth is a 132-bed, not-for-profit community hospital, which has three adjacent medical office buildings on the 150-acre campus. Northside Hospital - Forsyth has a staff of more than 1,300 employees and 400 physicians and serves Forsyth, Dawson, North Fulton, west Gwinnett, east Cherokee and parts of Hall Counties. The facility has an ICU, certified state-of-the-art trauma emergency room, inpatient and outpatient surgery, radiology, life flight unit and a new woman's center which opened in 2008.

Other hospitals in the area include:

#### *Northwoods Medical Specialists*

1230 Bald Ridge Marina Road, Cumming. This healthcare facility offers a wide range of diagnostic services, affiliated physician specialists and community health education classes.

#### *Emory Johns Creek Hospital*

6325 Hospital Parkway, Johns Creek. Emory Johns Creek Hospital is a 110-bed hospital featuring some of the most advanced medical technologies available. Serving the City of Johns Creek and the surrounding communities, Emory Johns Creek Hospital offers a full range of services, including emergency services staffed with board certified, emergency physicians, surgery, cardiology, oncology, advanced imaging capabilities and intensive care.

#### *Lanier Park Hospital*

675 White Sulphur Road, Gainesville. Lanier Park Hospital is an acute care facility offering a variety of outpatient procedures, 24-hour emergency room, MRI, neurosurgery, pulmonary medicine, pain management and women's health.

#### *North Fulton Hospital*

3000 Hospital Boulevard, Roswell. This is a full-service, 202-bed, acute care hospital located on SR 9, Alpharetta Highway, in Roswell. Opened in 1983, NFH serves North Fulton and surrounding counties through its team of over 1,000 employees, 400 staff physicians and 200 volunteers. NFH is a state designated Level II trauma center and provides a continuum of services through its centers and programs, including neurosciences, orthopedics, rehabilitation, surgical services, bariatric surgical weight loss, gastroenterology and oncology. The hospital is fully accredited and is also certified as a Primary Stroke Center by the Joint Commission on the Accreditation of Healthcare Organizations, the nation's oldest and largest hospital accreditation agency.

*Northeast Georgia Medical Center*

743 Spring Street, Gainesville. Northeast Georgia Medical Center offers a full range of health-care services, from a full-service imaging center, two long-term care centers and a mental health and substance abuse treatment center. Led by volunteer boards made up of community leaders, the 557-inpatient, 261-skilled nursing bed serves almost 700,000 people in more than 13 counties across Northeast Georgia.

Three other hospital centers that may serve county residents include two other Northside Hospital locations, one in Cherokee County and the other in Sandy Springs and Chestatee Regional Hospital in Dahlonega.

The Forsyth County Health Department handles both physical and environmental health issues. The physical health component of the department is a referral and basic screening facility. They offer a variety of services including child and adolescent health and dental services, adult health services including a woman's clinic, disease screening and immunizations. The environmental health section is responsible for permitting and inspecting food facilities, on-site sewage disposal systems and the enforcement of the state pool regulations as well as handling rabies prevention in the community.

## **Educational Facilities**

### **Public School System**

The Forsyth County Board of Education is the governing body of the Forsyth County School System that consists of five members who are elected at-large to staggered, four-year terms representing individual districts. Currently, county campuses include nineteen elementary schools, nine middle schools, five high schools, one non-traditional high school, Forsyth Academy, and one alternative school, Academies for Creative Education. In addition, there are five future schools planned at specified locations across the county. The locations of the existing and proposed school sites whose locations have been identified are presented in Figure 9. It is projected that by the 2012-13 school year, ten elementary schools, two middle schools and two high schools will be over capacity.

The Forsyth County School System maintains a high standard of excellence. All existing schools are accredited by the Southern Association of Colleges and Schools and have exceeded the standards as defined and measured by the Georgia Department of Education. Seven schools are Georgia Schools of Excellence including: Big Creek, Chattahoochee, Mashburn and Midway Elementary Schools; Otwell Middle School; and Forsyth Central and North Forsyth High Schools. The Schools of Excellence Program began in 1984, which honors two educational institutions from each of the state's thirteen congressional districts that have finished in the top ten percent for student achievement in reading and language arts and math or those institutions that demonstrated the greatest gains for student achievement in reading and language arts and math over a three year period. In 2001, Big Creek Elementary School was named a National Blue Ribbon School, which honors schools as national role models for academic superiority or dramatic increases in student achievement.

### **Private Schools**

In addition to the public school system, Forsyth County residents have access to a number of

private schools including the ones listed below:

- Covenant Christian Academy, 6905 Post Road, Cumming.
- Cornerstone Schools, 4888 Browns Bridge Road, Cumming.
- Fideles Christian School, 1390 Weber Industrial Drive, Cumming.
- Friendship Christian School, 3160 Old Atlanta Road, Suwanee.
- Forsyth Christian School, 1250 Alpha Drive, Alpharetta.
- Greater Atlanta Christian, 1575 Indian Trail, Norcross.
- Horizon Christian Academy, 2160 Freedom Parkway, Cumming.
- Ivy League Montessori School, 1791 Kelly Mill Road, Cumming.
- Lakeview Academy, 796 Lakeview Academy Drive NE, Gainesville.
- McGinnis Woods Country Day School, 5368 McGinnis Ferry Road, Alpharetta.
- Montessori Academy at Sharon Springs, 2830 Old Atlanta Road, Cumming.
- Pinecrest Academy, 955 Peachtree Parkway, Cumming.

### **Colleges and Universities**

Lanier Technical College is a unit of the Technical College System of Georgia that provides workforce training development for Banks, Barrow, Dawson, Forsyth, Hall, Jackson, Lumpkin and north Fulton Counties. The Forsyth campus, one of five campuses with a combined total of over 4,000 students, is located on Majors Road. The campus offers a variety of certificate, degree and diploma programs.

The University System of Georgia identified Forsyth County as an underserved region of the state for higher education and, in response, the Board of Regents approved a request from North Georgia College and State University and Gainesville State College to build a non-residential instructional site on Pilgrim Mill Road off SR 400. The campus could open as soon as 2012 with a wide range of degree options including two and four year undergraduate as well as graduate programs. Presently, North Georgia College and State University offers nursing undergraduate programs, graduate studies in business and education in addition to continuing education courses within Forsyth County. Other educational institutions in the vicinity include:

- Brenau University, Gainesville.
- DeVry University, Alpharetta.
- Gainesville State College, Gainesville.
- Reinhardt University, Waleska.

### **Other Public Educational Facilities**

#### *Forsyth County Library System*

In March 2010, the Forsyth County Public Library gained a third location with the Hampton Park Library opening, bringing the entire collection to greater than 250,000 materials including books, audio, video and multimedia items. There were over 1.5 million total checkouts for the 2009 fiscal year and more than 73,000 active patrons. Forsyth County Public Library earned the “Best Library in Georgia” distinction five times in the past seven years and is currently among the top twelve Southeast libraries due to its index ratings by the Hennen American Public Library (HAPLR) report. See Figure 10 for a map of the public libraries and other county educational facilities.

FIGURE 9: PUBLIC SCHOOLS OF FORSYTH COUNTY

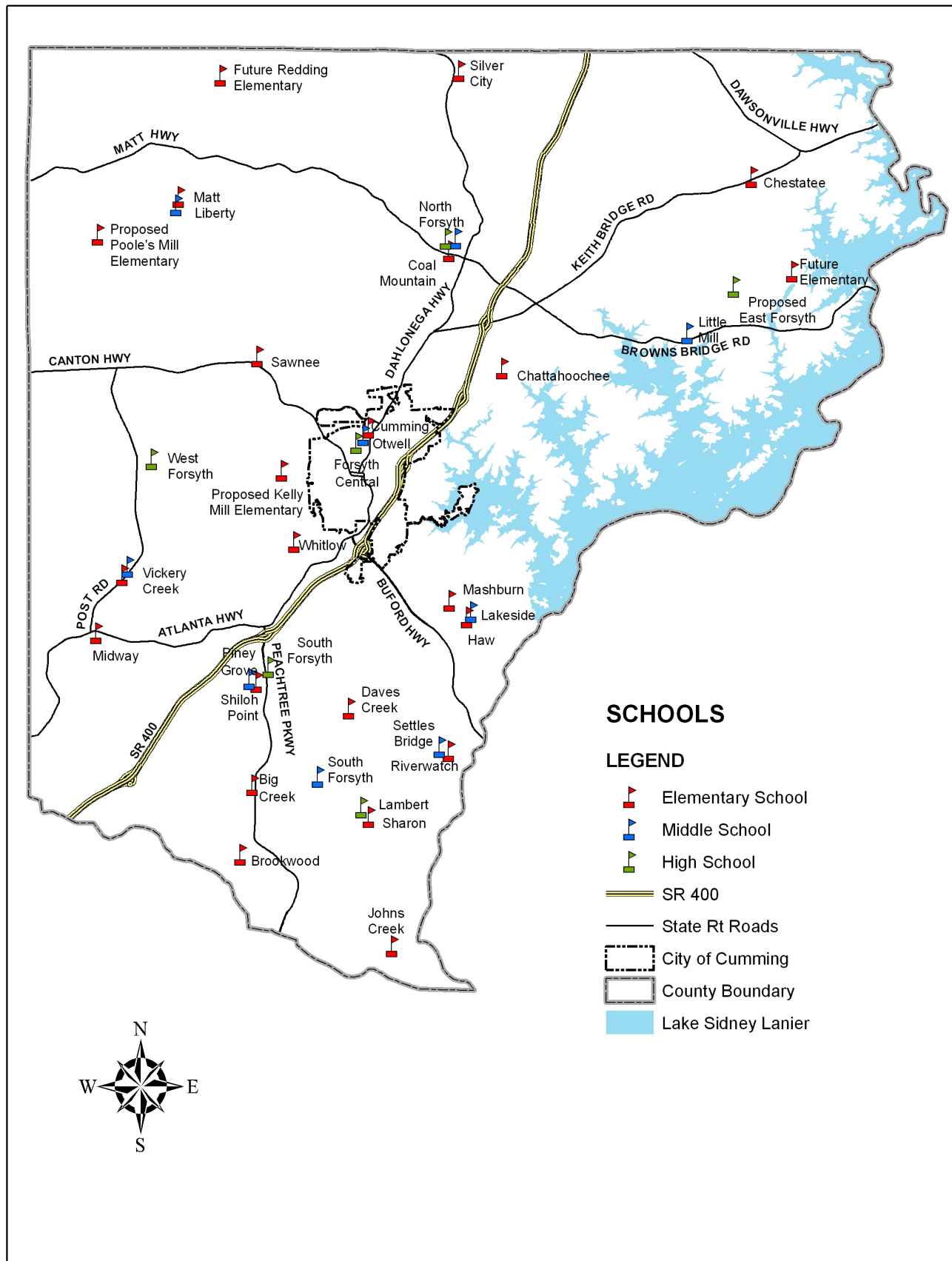
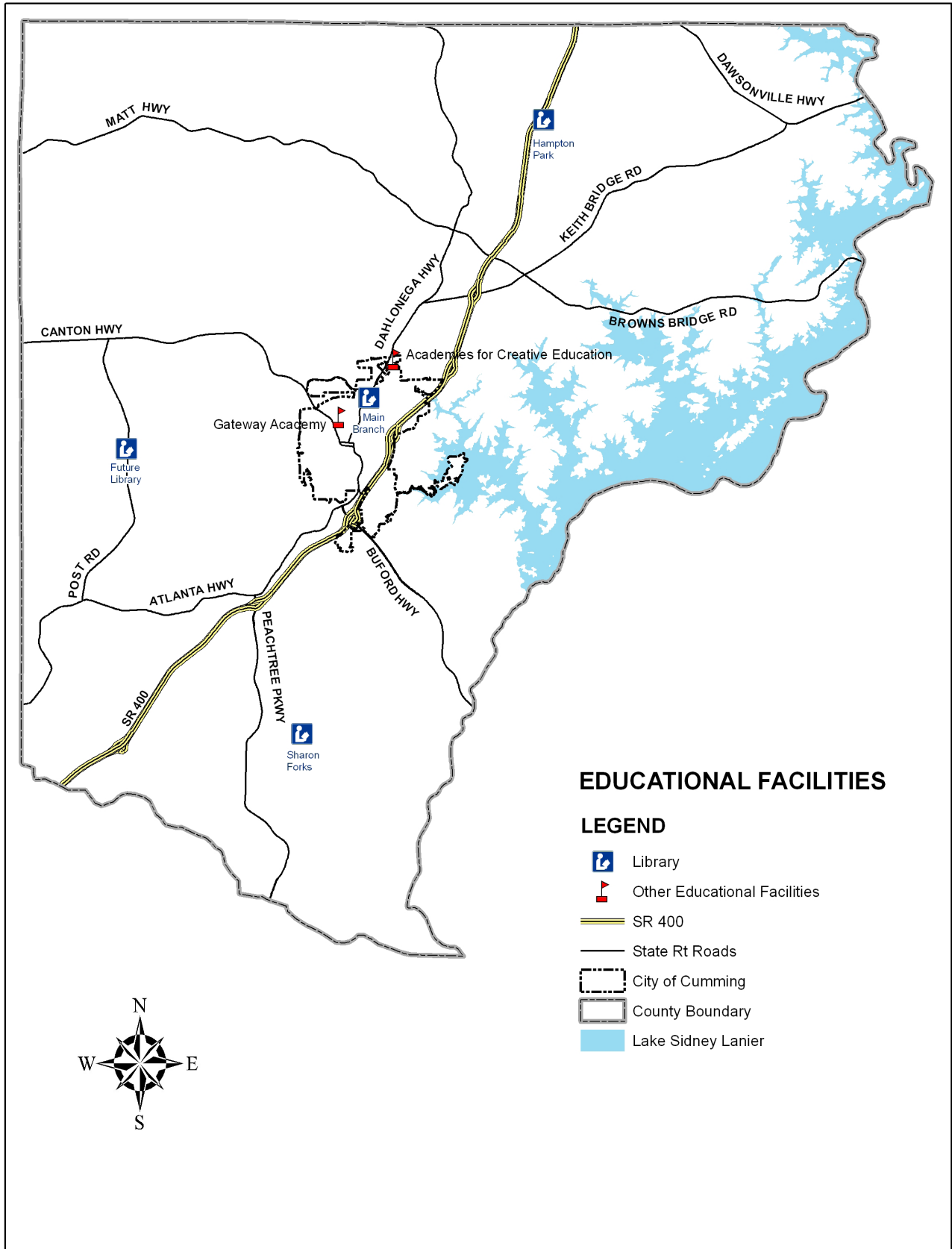


FIGURE 10: LIBRARIES AND OTHER PUBLIC EDUCATIONAL FACILITIES OF FORSYTH COUNTY



## Social and Senior Services

### Social Services

Forsyth County provides funding for a variety of social services programs, including those provided by the Georgia Department of Human Services' Division of Family and Children Services (DFCS). The Forsyth County Social Services Committee annually reviews funding applications and provides recommendations to the Forsyth County Board of Commissioners for funding allocations to various non-profit organizations. These organizations, in turn, provide a range of programs, benefits and services across the county to improve the quality of life for families, children and adults.

### Senior Services

The Forsyth County Senior Services Department provides services for seniors, their families and caregivers throughout the county. Most of the services provided are mandated under the Older Americans Act of 1965. Forsyth County's program has provided the local senior community for more than 35 years with services such as home delivered meals, group meals, transportation, information and referrals, an Alzheimer respite program and wellness activities. These services, although previously privatized, have been exclusively under county management since 2001.

#### *Center at Charles Place*

595 Dahlonega Highway, Cumming. This is the longest-running senior center within the county. All federally funded senior programs take place in this facility including Meals on Wheels. Charles Place receives federal and state funding through Legacy Link Inc., the county's Area Agency on Aging as designated by the Georgia Department of Human Resources. The center is funded to provide services to older citizens such as hot midday meals, home delivered meals, recreation, transportation, outreach, information and referrals, intake for employment and training, educational opportunities and other services to help older persons remain independent. Senior Services also provides an Alzheimer Respite program to benefit the person with Alzheimer's and their caregiver.

#### *Hearthstone Lodge Community Center*

7305 Lanier Drive, Cumming. This facility serves individuals aged 50 and over with an active adult focus including wellness and exercise programs. In 2007, the Hearthstone Lodge Community Center was purchased and, in 2008, began activity programming. The site has a pool and accommodates senior activities such as aquatics and hiking. The funding for these programs is provided through a combination of county monies, membership and class fees and contributions from participants, local churches and civic groups.

#### *Sexton Hall Enrichment Center*

2110 Sharon Road, Cumming. This facility will open in late 2011 and shall be the largest senior center, serving individuals aged 50 and above.

FIGURE II: SENIOR SERVICE FACILITIES OF FORSYTH COUNTY

